



Hog Heaven Anti-Fatigue Mats

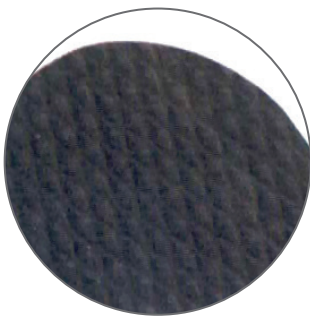
Sore Knees?

- ✓ Static Dissipative
- ✓ Welding Safe
- ✓ Chemical Resistant
- ✓ Recycled Content

Most people think of anti-fatigue as just something to “make the floor softer”. Experts tell us that well-designed anti-fatigue matting can do much more. Any employee who is required to stand for extended periods is subject to becoming distracted with the discomfort that can result from the incorrect type of support underfoot.

Hog Heaven anti-fatigue mats are firm enough to hold up to the long-term wear and tear of daily use while providing enough cushioning to relieve stress and discomfort.

- ✓ **Comfortable:** High-density nitrile-blended cushion helps eliminate pressure to the lower back and legs, providing superior comfort.
- ✓ **Safe:** Certified high-traction by the National Floor Safety Institute (NFSI); sloped edges provide a safe transition from floor to mat.
- ✓ **Durable:** Nitrile-blended cushion provides years of useful service life; cushion is molded, not glued, to the nitrile rubber surface so it will not separate; edges will not crack or curl.
- ✓ **Versatile:** Welding safe; ESD* rating of electrically conductive; chemical resistant; surface is grease/oil proof and cushion is grease/oil resistant.



Solid Black



Caution Yellow

INCREASE EMPLOYEE PRODUCTIVITY AND POSITIVE MORALE WITH HOG HEAVEN ANTI-FATIGUE MATS.

The Benefits of ANTI-FATIGUE MATS

Anti-Fatigue mats alleviate stress to the back and legs by providing a cushioned surface to stand on.

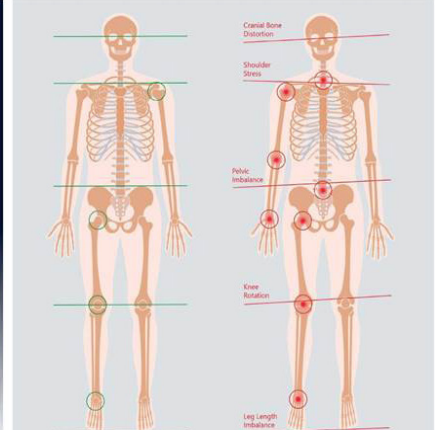
Anti-Fatigue mats are perfect for people who have to stand or work in the same place for continual periods of time.

Anti-Fatigue mats are recommended for a wide variety of industries and are commonly placed in various applications such as:

- Production or assembly lines
- Stand Up Desks or Workstations
- Kitchens
- Cashier Desks
- Laboratories and many more

M+A Matting Anti-Fatigue mats have been shown to do the following:

- **REDUCE ENERGY CONSUMPTION BY UP TO 50%** in the supporting muscles such as those in the leg and the lower back, when compared to standing on a hard floor
- **REDUCE FATIGUE** by promoting subtle movement in the leg and calf muscles, resulting in increased blood and oxygen flow



BALANCED

- Improves structural alignment and joint function
- Improves muscular balance and prevents nerve impingement
- Reduces uneven wear and tear on joints
- Body weight evenly distributed
- Efficient natural movement
- Reduced pressure on organs

IMBALANCED

- Neck pain and headaches
- Shoulder restrictions and pain
- Arm and hand pain nerve entrapment
- Bulging discs/back pain
- Uneven pressure/knee pain
- Uneven weight distribution
- Foot and ankle pain

Solid 100% nitrile rubber top surface

Beveled edges on all four sides for added safety.



Premium nitrile cushion

HOG HEAVEN ANTI-FATIGUE MATS

Standard Sizes

2' x 3', 3' x 5', 3' x 12', 4' x 6', 5' x 8'

Custom Sizes

Width: 2' (21"), 3' (33"), 4' (46"), 5' (58")

Length: up to 60' maximum

Thickness: 5/8" and 7/8"

Sizes may not be exact and are subject to a 3% variance due to manufacturing processes.



CERTIFIED ANTI-SLIP BY THE NATIONAL FLOOR SAFETY INSTITUTE

*ESD - ELECTROSTATIC DISCHARGE





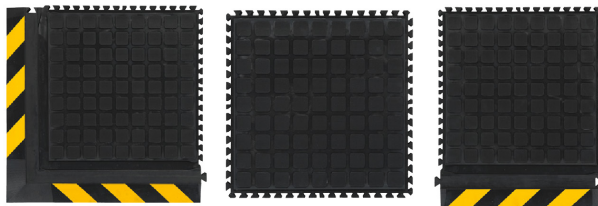
Hog Heaven III Comfort Modular Tiles

- ✓ Linkable
- ✓ Static Dissipative
- ✓ Chemical Resistant
- ✓ Modular with Wedge Lock
- ✓ Welding Safe
- ✓ 20% Recycled Nitrile Rubber

Hog Heaven III Comfort Tiles provide a customizable matting solution for virtually any configuration. They offer outstanding anti-fatigue qualities and perform in various industrial settings such as manufacturing facilities, distribution centers, and machine shops. They can be placed on metal grating and in areas where chemicals, grease, and oil are present.

- ✓ **Comfortable:** High-density, closed-cell nitrile-blended cushion provides excellent anti-fatigue qualities to help reduce the pain and fatigue associated with standing for long periods of time.
- ✓ **Safe:** Certified high-traction by the National Floor Safety Institute (NFSI); beveled edges provide a safe transition from floor to mat and will not crack or curl.
- ✓ **Durable:** Nitrile-blended cushion provides years of useful life and is molded, not glued, to the nitrile rubber surface so it will not separate.
- ✓ **Versatile:** Welding safe; grease/oil proof; chemical proof; ESD rating of electrically conductive.

HOG HEAVEN III MODULAR TILE COMFORT



Corner Tile Center Tile Side Tile

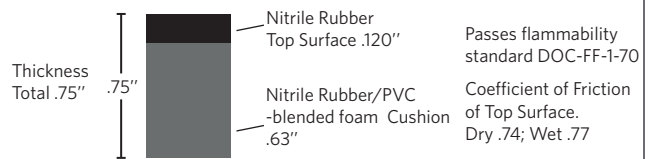
HOG HEAVEN III LINKABLE MATS COMFORT



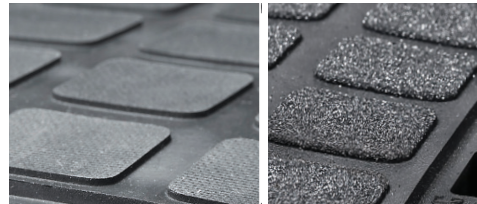
Mat End Mat Middle Mat End



Hog Heaven III Modular Tile Comfort



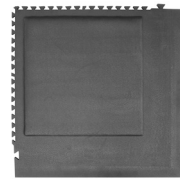
- BORDERS** • Solid Black • Caution Yellow Striped
- SURFACES** • Tread • Tread with Grit



CERTIFIED ANTI-SLIP BY THE NATIONAL FLOOR SAFETY INSTITUTE

MAT SIZES

- 18" Center Tile: 18" x 18"
- 18" Side Tile: 18" x 21.875"
- 18" Corner Tile: 21.875" x 21.875"
- 36" Center Tile: 36" x 36"
- 36" Side Tile: 36" x 39.875"
- 36" Corner Tile: 39.875" x 39.875"



Mat Backing

ESD* rating of electrically conductive, chemical resistant and grease/oil proof.

Sizes may not be exact and are subject to a 3-5% variance due to manufacturing processes.

