



Genuine Fasteners

How can you ensure a fastener is genuine OEM?

In a world of “copycats” and “knockoffs”, it has become increasingly more difficult to identify genuine OEM structural blind fasteners or lockbolts.

RELIABILITY and **PERFORMANCE** are key indicators of structural blind fasteners and lockbolts.

There are so many variations of fasteners for all types of manufacturing. Watch for the signs of an inauthentic fastener:

WATCH FOR THE SIGNS

- ✓ MATERIALS/ALLOYS
- ✓ DIMENSIONS
- ✓ COUNTRY OF ORIGIN
- ✓ QUALITY CONTROL

A well-optimized fastener selection can offer many tangible benefits to the manufacturer and end-user. It can make a significant difference in both **MANUFACTURING AND RECALL/WARRANTY**.

What does genuine Huck® look like?

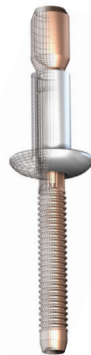
Installed structural Huck blind fasteners and lockbolts

Bobtail®

1. Pintail-less means reduced noise and improved corrosion resistance.
2. Installation indicator.
3. Collar swaged into the lock groove.
4. Low-swage technology.

Magna-Grip®

1. Flush breaking lock groove design.
2. Material swaged into the annular pin grooves.
3. High, consistent clamp loads and gap removal.



Magna-Lok®

1. Flush pin break.
2. Solid circle lock.
3. Retain high clamp load.
4. Sleeve expands creating moisture resistant joint.

HuckLok®

1. Quick visual inspection.
2. Undercut fillet allows flush seating.
3. High shear strength and pin retention.
4. Double locking feature.

Distinct Huck® Advantages

- ✓ Retain their mandrel after installation
- ✓ Increased tensile & high shear strength
- ✓ Increased load carrying ability
- ✓ Achieve vibration resistance





The Difference Is In The Features

✓ Huck® structural blind fasteners and lockbolts are available in a variety of:

- Materials
- Diameters
- Headstyles
- Finishes/Platings
- Structural Strengths

✓ Bobtail® - Unique, pintail-less design.

✓ Magna-Grip® - Flush breaking, distinctive locking grooves.

✓ Magna-Lok® - 360° solid circle lock.

✓ HuckLok® - Exclusive double locking action.



Sheet-Line bulb Comparison

Even in minimum-grip applications, Huck fasteners outperform the competition. They're engineered to form a bulb directly on the sheet line, precisely where it's needed, to prevent pull-through.



Auto-Bulb®

Bulb forms directly on sheet line.

The Competition

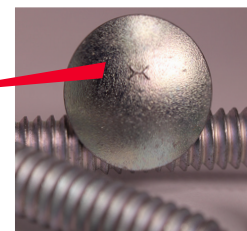
Bulb forms irregularly above sheet line resulting in lower installed value.



Quality + Integrity = **GENUINE**

Huck fasteners have a stamp of approval - the "DOG BONE"

The head marking ensures that Huck fasteners are easily identified during the installation process and once installed.



Huck Dog Bone or Lazy 'H'

GENUINE HUCK® FASTENERS

