



# DETAILING PRODUCTS FOR PROFESSIONALS

## PRODUCT CATALOGUE



**PRODUCTS AND SYSTEMS THAT  
DRIVE YOUR PROFITABILITY**



## Auto Valet



### Quality Like No Other

quality (ˈkwɒlɪti) n, pl qualities.

1. a distinguishing characteristic or attribute.
2. the basic character or nature of something.
3. degree or standard of excellence, esp. a high standard.

Quality. It's what we build into every Auto Valet product. Where does it come from? It comes from many areas! Quality comes from manufacturing our complete line right here in Canada! Quality comes from being a family business with three generations of family involved in the day to day operations of our company! Quality comes from a dedicated workforce! Most of our employees have been with us for many years!



Quality comes from formulating our products with the most effective ingredients, in our own lab! Quality comes from adhering to strict manufacturing and quality analysis procedures! Quality comes from having environmental recognitions for our products! Not everyone's products are good enough to achieve a OECD-301 status!

Quality comes from dedicated distributors! You can't purchase the Auto Valet line from just anyone. Our distributors have in-depth product knowledge and are familiar with all aspects of vehicle reconditioning so as to provide the best possible service & support to you, our customer!

Put the Auto Valet line to the test in your detail facility today and begin to experience quality, like no other!

	<b>4L JUG</b>		<b>20 KG PAIL</b>		<b>210L DRUM</b>
	<b>20L CUBE</b>		<b>60 KG KEG</b>		<b>180 KG DRUM</b>
	<b>1 L BOTTLE</b>		<b>60L KEG</b>		<b>AEROSOL TIN</b>



**STRENGTH OF 4**

**THE AUTO VALET AGGRESSIVENESS METER ENSURES THAT YOU USE THE RIGHT STRENGTH COMPOUND FOR THE RIGHT JOB. BASED ON LEVELS 1 TO 5; 1 BEING LOWEST, 5 BEING THE HIGHEST LEVEL OF AGGRESSIVENESS.**



**BODYSHOP SAFE**



**ENVIRONMENTALLY FRIENDLY**

1. COMPANY PROFILE
2. TABLE OF CONTENTS
- 3-4. CLEANERS / DEGREASERS
5. SOLVENT CLEANERS / DEGREASERS
6. SPECIALTY CLEANERS
- 7-8. VEHICLE WASH SOAPS
- 9-11. CARPET & UPHOLSTERY CARE
12. ODOUR CONTROL
- 13-14. DRESSINGS & PROTECTANTS
15. COMPOUNDS
16. PAINT PROTECTANTS, WAXES & FINISHES
- 17-20. DISPENSING ACCESSORIES
- 21-23. CAR WASH ACCESSORIES
24. RIM & TIRE ACCESSORIES
- 25-27. DETAILING ACCESSORIES
28. CYCLO ACCESSORIES
- 29-30. POLISHING ACCESSORIES
31. SAFETY & SURFACE PROTECTION
32. SHOP MAINTENANCE
33. PROPORTIONING SYSTEMS
  
34. INDEX BY PRODUCT

## Cleaners / Degreasers



### PURPLE POWER®



**Product Code No. 330**

The all time winner! Experience the effectiveness and economics of this powerful all-purpose concentrate which out-performs and replaces even solvent degreasers. Simply dilute with water to achieve the ideal strength solution for the job. Use on engines, door jambs, tires, carpets, upholstery, concrete floors and more. Effectively removes oil, grease, rust stains, carbon, dirt, etc. Free rinsing, controlled foam. Certified "readily biodegradable" according to independent OECD-301 testing.



### TRANSPORT

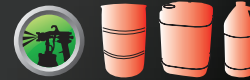


**Product Code No. 332**

Transport is a proven cleaner/degreaser designed to be tough on grease and grime, but easy on painted surfaces. Transport excels as a transport truck wash and a new vehicle transit coating remover but is also very effective as a general purpose cleaner degreaser for engines, tires, etc. Safe on glass and aluminum. Biodegradable, non-flammable, foamy.



### FURY

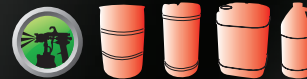


**Product Code No. 335**

Fury is an aggressive cleaner and degreaser designed to tackle the most difficult tasks. For use on exterior and interior surfaces such as engines and door jambs, tires, carpet and upholstery, vinyl and plastics. Not for use on glass. Contains no petroleum solvents. Non-flammable.



### D'LIMOKLEEN



**Product Code No. 338**

Designed for the environmentally-conscious user. This micro-emulsion cleaner employs a natural citrus solvent and a unique blend of surfactants to achieve excellent cleaning and degreasing power. Effectively removes oil, grease, grime, clay soils, and more from engines, tires, door jambs, carpets, upholstery, etc. Pleasant citrus odour, free rinsing, biodegradable.

## Cleaners / Degreasers



### ULTRA KLEEN



Product Code No. **360**

This powerful ready-to-use spray cleaner easily penetrates and lifts grease, oil, wax, clay soils, nicotine and protein type soils. It is an ideal cleaner for dried bug residue, white walls, plastic and vinyl surfaces, seat belts and much more. Ultra Kleen may be diluted up to 1 part to 40 parts water, which makes a very effective cleaner for lighter applications.



### IMAGE

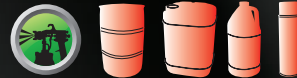


Product Code No. **342**

A true workaholic! Image glass cleaner keeps right on working quickly to remove filthy grimy films, fingerprints, and smudges from glass, mirrors, chrome and plastics. Controlled drying to minimize wiping time. Streak free results.



### FAST ACTION



Product Code No. **340**

Fast Action is an excellent cleaner for windows, mirrors, and plastics and will not stain chrome or harm after-market tint. Effectively removes fingerprints, smudges, and other grimy films. The finished surface repels dust and dirt.



### PLUS 40



Product Code No. **344**

A glass cleaner concentrate for the economy minded. Dilute one part Plus 40 with 39 parts water for an effective cleaner with all the attributes of a ready-to-use product.

## Solvent Cleaners / Degreasers



### SUPER-O



Product Code No. **170**

Super-O is an excellent solvent degreaser for use on all areas of the vehicle from engines, body parts to the interior fabrics etc. Super-O effectively removes grease, tar, oil, gum, wax and cosmoline from most surfaces. Super-O is a natural solvent with a pleasant odour. It works well for cleaning and polishing stainless steel, and quickly removes large areas of decal adhesive from painted surfaces.



### SUPER SOL



Product Code No. **173**

Super Sol is a quick drying solvent blend which effectively dissolves adhesives for the easy removal of labels from glass, metal, painted surfaces and plastic. Super Sol can also be used for dissolving tar, grease, and oily soil deposits on carpets and upholstery and on exterior paint etc.



### ENGINE KLEEN



Product Code No. **175**

Engine Kleen is a quick acting solvent based engine degreaser which dissolves grease and oil, then emulsifies them with the rinse water for quick removal. Engine Kleen contains no harmful chlorinated solvents and has a low odour, making it pleasant to work with.



### OUST



Product Code No. **177**

Oust is a quick acting solvent based cosmoline remover which dissolves cosmoline and then emulsifies it with the rinse water for quick removal. Oust works equally well on rust proofing overspray and road tar. Oust contains no harmful chlorinated solvents and has a low odour making it pleasant to work with.

## Specialty Cleaners



### FLAME



Product Code No. **302**

Flame is an extremely powerful acid based wheel cleaner. Use only as directed, following all precautions. Flame is an aggressive cleaner which eliminates the need for brushing or scrubbing. It easily penetrates and lifts off brake dust and other road film deposits. When rinsed, the wheel is left clean, bright and streak free! Not recommended for use on chrome plated alloys.



### WHEEL BRITE



Product Code No. **304**

Wheel Brite is the safe cleaner for all types of wheels. It employs a combination of special penetrants and builders to effectively loosen and carry away brake dust and road film. Wheel Brite is ready to use and requires no dilution. Excellent for use in tunnel wash rim cleaning equipment.



### KNOCK OUT



Product Code No. **306**

Knock Out effectively removes industrial fallout such as rail dust and smoke stack fly ash. This product, used with care, dissolves the minute iron particles which are imbedded in the painted surface. Knock Out is formulated with mild organic acids which are safe on glass and paint.



### VANISH



Product Code No. **308**

Vanish is a safe, easy to use, non-fuming acid cleaner. Vanish works like magic to remove unsightly soap deposits in tunnel washes on brick, block, ceramics, metal and painted walls; on floors, fiberglass, lexan, glass and stainless steel. When used as directed, Vanish easily removes splashes of hardened concrete from automotive paint surfaces without damaging the paint and performs well as an alloy rim cleaner. Cleans bright stainless steel without staining.

## Vehicle Wash Soaps



### AUTO WASH



**Product Code No. 110**

Auto Wash – car wash and shine is a one step wash and shine designed to give outstanding results with maximum economy. It produces abundant suds, loosens the most stubborn soils, and rinses easily. A lustrous sheen is achieved with little or no drying. Certified biodegradable according to OECD-301 testing.



### ECO KLEEN



**Product Code No. 112**

Eco Kleen is a high quality car wash soap with medium viscosity intended for use with a proportioner in cloth or brush tunnel washes, foam brushes and also for hand washing. It features superior cleaning, rich foam, high lubricity and streak-free rinsing. Certified biodegradable according to OECD-301 testing.



### FORMULA ONE



**Product Code No. 114**

Formula One is a premium quality, concentrated friction car wash detergent suitable for use as a manual wash with brush or mitt. It is an excellent performer with dense foam, top cleaning power, excellent lubricity and rinsability. Formula One excels at removing overspray from oil-based rust inhibiting solutions.



### AUTO GLEAM



**Product Code No. 115**

Auto Gleam is our ultimate car wash and shine designed to overcome the disadvantages of hard water. Premium detergents and other special ingredients are incorporated to bind the minerals which inhibit the foaming, cleaning and rinsing abilities of ordinary soaps. Auto Gleam is truly an extraordinary soap and produces extraordinary results. Requires minimal chamoising. Highly concentrated.



# Vehicle Wash Soaps

Vehicle Wash Soaps



## COBRA



**Product Code No. 116**

Advanced technology and premium components make Cobra a leader in touchless vehicle washing. Superior results are achieved because of Cobra's ability to penetrate, lift and float away the most resistant road films, oil, grease, and clay soil quickly and consistently. Cobra also attacks bug residue and carbon deposits (exhaust, etc.) on painted vehicle surfaces as well as on aluminum, painted wood and metal. Applied with either high or low pressure and rinsed with high pressure (500 psi and up) it works with amazing rapidity and requires no brushing. Cobra leaves the surface protected and with an outstanding gloss. Works equally well in hot or cold water. Ideal for cleaning heavy equipment and floors.



## PRESSURE KLEEN 2001



**Product Code No. 135**

Pressure Klean 2001 is a premium powdered cleaner/degreaser with peak cleaning abilities in combination with economical costs. It is formulated for use in both high pressure wash equipment and manual use. Pressure Klean 2001 dissolves rapidly in water to make the power packed solution that quickly penetrates and emulsifies grease, oil, grime and other soils. Pressure Klean 2001 is an excellent car and truck wash or heavy duty degreaser on engines, garage floors, heavy equipment, etc.



## SPEED BEAD (DRYING AGENT)



**Product Code No. 825**

Speed Bead is designed as an out-performing drying agent for tunnel washes and self-serve bays. This concentrated product achieves excellent water bead up, finishing the vehicle surface with a protective microfilm and a superior gloss.

## Carpet & Upholstery Care



### PREZYME

Prezyme removes organic soils, stains and the malodors connected with them. Blood, urine, vomit, fats, grease, oil, food particles, coffee, milk, etc. are consumed by this living cleaner. Excellent for use on carpets and upholstery prior to shampooing or deep cleaning.



Product Code No. **200**



### COUNTERACT

Counteract is a mild acidic cleaner which effectively dissolves stubborn and unsightly salt deposits and encrustations on carpets. Excellent on vehicle exteriors for removing calcium deposits caused by concrete condensation in underground parking bays, etc.



Product Code No. **202**



### X-TRACT

X-Tract is an excellent hot water extraction detergent which quickly and effectively breaks down dirt, grime and grease in all types of carpet and fabrics etc. It removes most stains and leaves a clean fresh aroma. X-Tract leaves no residue, thereby preventing resoiling.



Product Code No. **210**



### CRYSTAL FOAM

Crystal Foam is a unique foaming shampoo for use on carpets and upholstery using the rotary scrub, dry foam or bonnet buff method. Crystal Foam develops a rich lather, which lifts and encapsulates soils and prevents redeposition. Residual foam dries to a brittle crystal, which vacuums out easily. Soft on velours. Pleasantly scented. Easy to use by hand, Crystal Foam is a must for detailing shops without an extractor.



Product Code No. **212**

# Carpet & Upholstery Care

Carpet & Upholstery Care



## FABRIC SHIELD



**Product Code No. 214**

Fabric Shield is a quick drying protectant for use on natural and synthetic fabrics. It does not block fabric breathability or destroy the fabric feel. Fabric Shield gives the fabric superior repellency and stain resistance while leaving no residual odour.



## DEEP CLEAN



**Product Code No. 216**

This specialized ready-to-use cleaner combines the ability to clean deep into the pores of leather while softening and moisturizing. Use Deep Clean to safely remove dirt, grime and stains from leather, vinyls and plastics.



## SOFT TOUCH



**Product Code No. 218**

A deep penetrating lotion which moisturizes, protects and preserves smooth leather. Soft Touch buffs to a lustrous sheen bringing out the distinctiveness of leather. Easy to use with attractive results. Soft Touch imparts a "like new" leather fragrance to all areas conditioned.

## Carpet & Upholstery Care



Auto Valet Vinyl, Plastic & Carpet Dyes come in over 30 colours, matched to O.E.M. standards. Use to restore automotive carpet, vinyl and plastic. Specially formulated to leave carpet and vinyl soft and flexible, with a permanent coating that won't crack, split, peel or rub off. For accurate colour matching, be sure to request a dye chart from your Auto Valet distributor.

### DYES

WHITE	R250	DEEP BLUE	R268
OFF-WHITE	R251	DOVE GRAY	R269
BEIGE	R252	LIGHT GRAY	R270
DOESKIN	R253	SILVER METALLIC	R271
DESERT TAN	R254	GRAY METALLIC	R272
KHAKI	R255	GRAY	R273
CAPPUCCINO	R256	CARBON GRAY	R274
LIGHT BROWN	R257	DARK GRAY	R275
SAND	R258	DARK GRAY METALLIC	R276
TAN	R259	FLAGSTONE	R277
CHOCOLATE	R260	CHARCOAL GRAY	R278
BROWN	R261	TAWNY GRAY	R279
CHESTNUT	R262	BLACK	R280
LIGHT BLUE METALLIC	R263	RED	R281
SKY BLUE	R264	AUTUMN RED	R282
MEDIUM BLUE	R265	DARK RED	R283
BLUE	R266	BURGUNDY	R284
DARK BLUE METALLIC	R267	DEEP GREEN	R285

# Odour Control / Air Fresheners

Odour Control / Air Fresheners



## DEODORIZERS

The active ingredients in the Auto Valet Deodorizers eliminate malodors by neutralization. These products are not a coverup. Auto Valet Deodorizers are highly concentrated and should be used as directed for economy and effect. Choose from the following attractive selection of fragrances to replace the odors that have been destroyed and generate increased customer appeal.



- |                        |             |
|------------------------|-------------|
| <b>A. CHERRY</b>       | <b>A561</b> |
| <b>B. GREEN APPLE</b>  | <b>A562</b> |
| <b>C. SPRING FRESH</b> | <b>A563</b> |
| <b>D. NEW CAR</b>      | <b>A564</b> |
| <b>E. PINA COLADA</b>  | <b>A567</b> |
| <b>F. SMOKE ELIMO</b>  | <b>A565</b> |



## Dressings & Protectants



### RECOVER



**Product Code No. 160**

Recover, our premium grade solvent-based silicone liquid dressing formulated for the professional detailer who wants the best. Recover is used on automobile vinyl tops, rubber tires and trim. Recover exhibits outstanding water resistance to help keep rubber and vinyl clean and shiny longer. Excellent self-levelling properties for labour saving spray on applications.



### ENCHANTER



**Product Code No. 161**

Enchanter contains a unique blend of silicones that restore, seal, and protect rubber, vinyl, leather and wood. Enchanter's fragrance makes it pleasant to work with as Enchanter imparts that "like new" look. Enchanter is non-flammable and makes an excellent safe dressing for the engine compartment.



### ULTRA SHIELD

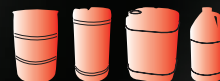


**Product Code No. 163**

Ultra Shield contains a unique blend of polymers that restores, seals and protects vinyl, leather and wood to the "like new" look. Being non-flammable makes Ultra Shield a must for dressing the engine compartment. Ultra Shield has a blossoming cherry fragrance making it pleasant to work with.



### TOP HAT



**Product Code No. 164**

Top Hat imparts a "classy" elegance to automotive rubber and vinyl. This silicone/solvent dressing and protectant applies evenly without streaks and levels to a durable wet-look finish. Top Hat repels water and resists detergents. Preferred by detailers who like a high viscosity wipe on dressing with low sling-off.

## Dressings & Protectants



### KWIK SHINE



Product Code No. **R16502**

If you are looking for a fast worker, it's here! Kwik Shine instantly shines bumpers, dashboards, vinyl tops, rubber hoses, door gaskets and more. No rubbing or wiping, just spray and walk away! Kwik Shine is hexane free for your safety. Ideal for "hard to wipe" areas like A/C vents and gear shift boots. Performs equally well for interior and exterior applications.



### TUXEDO



Product Code No. **165**

Tuxedo is a superior silicone/solvent dressing with a blossoming melon scent. Tuxedo is simple to apply, levels quickly and leaves a lasting satin shine. Use Tuxedo on tires, moldings, bumpers, vinyl trim, and vinyl tops for a vehicle with that "best dressed" look. Long lasting and water repellent, Tuxedo is a must for inclement weather.



### SAFETY SHINE



Product Code No. **166**

Safety Shine was formulated with body shop concerns in mind. Safety Shine contains no silicone, solvents or waxes and works well on tires and other exterior vinyl dressing applications. Safety Shine is self leveling and non-flammable for added value and safety for our satisfied customers.



### REWARD



Product Code No. **167**

Reward is a silicone free premium body shop safe, solvent based dressing. Reward gives that attractive new clean look to rubber tires, vinyl tops and trim. Reward's water repellency ensures a long-lasting clean and shiny look.

## Compounds



### RAPID CUT



**Product Code No. 810**

Rapid Cut is a fast cutting compound designed for efficient removal of twelve hundred grit marks, orange peel, paint runs and other surface defects. Rapid Cut is compatible with all paint systems and works effectively on catalyzed and other hard paints. The innovative self-lubricating technology means less water usage, low product fling and easy clean-up. Silicone and ammonia free – a must for the body shop environment. Diminishing abrasives reduce imperfections to a fine finish. If desired, any light swirls may be removed with Summit.



### ULTRA CUT



**Product Code No. 812**

This quick cutting compound is the ideal all round solution for the removal of paint imperfections such as 2000 grit wet sanding marks, orange peel, paint runs and oxidation. Defects are reduced using diminishing abrasives until an excellent swirl-free finish is produced. Ultra Cut incorporates a self lubricating technology which means less water usage, low product fling and easy cleanup. Silicone and ammonia free – a must for the body shop environment.



### SUMMIT



**Product Code No. 813**

Summit is a microfine polishing compound designed to remove the finest sandscratches and light oxidation. A superb high gloss is achieved through polishing the painted surface free of minor imperfections (ie; scratch and swirl marks, etc.). Summit employs a self lubricating technology which makes it easy to use, reduces water usage, and cleans up easily. Suitable for use on all types of automobile paint finishes. Contains no ammonia, silicones, or waxes.



### CLAYBARS



**Product Code No. R815**

The quick and simple way to remove contaminants from painted surfaces, chrome, fibreglass and aluminum. Spray Parade on surface as lubricant, rub Claybar over the affected area until clean. Removes light oxidation, overspray, tree sap, tar, water spotting, etc. Plastic holding case sold separately. 8 oz. bar size, gray is regular and purple is aggressive.



# Paint Protectants, Waxes & Finishes

Paint Protectants, Waxes & Finishes



## 50/50 ONE STEP



**Product Code No. 820**

50/50 One Step polish was professionally formulated as a one-step polish/wax for both traditional and clear coat finishes as well as repainted vehicles. It cleans, polishes, and finishes in one easy application and leaves a long lasting protective shine. It is effective in removing light oxidation and bringing back the colour of faded and dull finishes. 50/50 One Step also removes swirl marks and slight surface imperfections.



## ROYAL GLAZE



**Product Code No. 821**

Royal Glaze is ideal for quickly preparing new and used cars for display or delivery. It gently cleans the vehicle's painted surfaces and makes spiderweb scratches disappear. Royal Glaze is easily applied and removed by either hand or machine, buffs clean and produces a non-greasy deep gloss finish fit for a king.



## TROPICAL GOLD



**Product Code No. 823**

Tropical Gold combines the well-proven attributes of natural carnauba wax with modern technology to produce a superb deep-shine hard-shell finish. Tropical Gold glides on and off effortlessly by hand but can be used with an orbital buffer as well. Enjoy months of beautifying protection from harmful sun rays, harsh weather and detergents. Teflon Fortified.



## NORTHERN LIGHTS



**Product Code No. 824**

Northern Lights! The fast wax that makes the lights dance on vehicle finishes. This easy on, easy off wax applies by hand quickly, dries in minutes and wipes off with minimal effort. Northern Lights is a durable, non-greasy wax which removes light oxidation and imparts a deep gloss. Designed for all types of vehicle paint and produces exceptional results even on dark colors. Makes chrome glisten.



## PARADE



**Product Code No. 827**

A quick, easy product designed for maintaining the perfect finish on display or final delivery vehicles. Removes finger prints, smudges, and surface dust while enhancing luster. Perfect for removing all residue after buffing. Safe on all paint finishes, chrome, vinyl trim and glass. Parade is the recommended lubricant for use with Auto Valet compounds or a Claybar cleaning system.

## Dispensing Accessories

### B10101 BLUE/WHITE TRIGGER SPRAYER

- Ergonomic design and extra long trigger provides unsurpassed comfort
- 1.4 ml per stroke, 30-40% greater than standard trigger sprayers
- Extra large spray pattern
- Unique internal piston design provides better chemical resistance
- Works well with most common janitorial chemicals, even D-limonene products



### B10103 RED/WHITE TRIGGER SPRAYER

- High output: 1.2 ml per stroke – 30% more than other general use trigger sprayers
- Ergonomic Design: Longer, comfortable trigger
- Rear support fits comfortably in your hand
- Sturdy, heavy-duty construction: Enclosed piston provides protection against damage for longer life
- Shipper unit: Will not leak when used on bottles filled with liquid
- The only heavy-duty shipper unit that holds up to common cleaning chemicals



### B10104 GRAY CHEMICAL RESISTANT TRIGGER SPRAYER

- All the features of our popular model, plus superior chemical resistance
- Nozzle O-ring and piston cup are made of chemical resistant synthetic rubber
- 1.4 ml per stroke, 30-40% greater than standard trigger sprayers
- The B10104 holds up against harsh chemicals and solvents
- Use with the chemicals that cause standard trigger sprayers to fail



### B10110 1 LITRE AUTO VALET SPRAYER BOTTLE

- 1 litre bottle
- High-density polyethylene
- 28/400 neck finish
- Contains WHMIS panel for product customization
- Printed dilution graduations on sides of bottles



### B10105 HI-OUTPUT TRIGGER SPRAYER

- Highest output in the industry – 3.5 ml per stroke, 3-4 times greater than standard trigger sprayers
- Large heavy-duty design holds up to the most demanding usage applications
- “Comfort Grip” cushioned trigger minimizes user fatigue
- All heavy-duty applications: Auto detailing, industrial use



### B10111 WAX APPLICATOR BOTTLE W/ CAP

- 12oz. low-density polyethylene for easy squeeze
- 38/400 neck finish w/Yorker spout cap
- Yorker cap comes with sealer cap attached, .909” (.23cm) hole in spout



### B10106 HIGH-OUTPUT FOAMER TRIGGER SPRAYERS

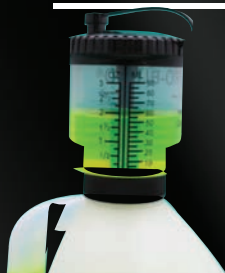
- Unique foamer tip produces a large volume of clinging foam
- Highest output in the industry – 3.5 ml per stroke, 3-4 times greater than standard trigger sprayers
- Large heavy-duty design holds up to the most demanding usage applications
- “Comfort Grip” cushioned trigger minimizes user fatigue
- Highest output – ideal for large, heavy-duty foaming requirements



## Dispensing Accessories

### B10202 38/400 PORTION AID

- Bottle proportioner for 4 litre bottles
- Easy to operate, simply turn the top clockwise to raise or counter-clockwise to lower the regulator
- Squeeze the bottle to the desired measurement and all excess liquid will flow back into the bottle
- Open safety cover and pour out the measured liquid
- Eliminates the need for expensive proportioning systems
- Reduced excess waste



### B10301 SWIVEL FAUCET — 3/4" THREAD POLYETHYLENE SWIVEL FAUCET

- 3/4" IPS size for standard drum, keg, or cube openings
- Gasket seals faucet body tightly to drum
- Easy swivel handle
- Small spout diameter for filling bottles
- Made from polyethylene
- Ideal for filling 1 litre Auto Valet sprayer bottles



### B10204 WALL BRACKET FOR JUG

- Use for mounting 4L Auto Valet jug on wall for proportioner supply
- Bracket epoxy coated



### B10302 FLO RITE 3/4" TAP

- Made from polyethylene
- 3/4" IPS size for standard drum, keg, or cube openings
- Fits standard threads
- Inexpensive for general purpose use
- Compatible with a variety of chemicals (not recommended for solvents)



### B10306 1 oz. JUG PUMP

- Plastic jug pump delivers 1 oz. (29.6ml) per stroke
- 38/400 adaptor fits 4 litre Auto Valet bottles
- Plunger locks down for shipping and storage
- 11" (27.9cm) dip tube, colour white
- Polypropylene with stainless steel spring
- Excellent for soaps and chemical concentrates



### B10303 38MM DISPENSING FAUCET FOR RIEKE SPOUT SR.

- Heavy-duty patented faucet assembly is leak free
- Extended dispensing spout fits standard 28mm bottle neck openings



### B10304 18MM DIAMETER REPLACEMENT VENT CAP FOR CUBES



### B10203 DISPENSING FAUCET, 38/400 NECK

- Fits 4 litre Auto Valet jug
- Made from polyethylene
- Small spout diameter ideal for filling 1 litre Auto Valet sprayer bottles



### B10305 70MM DIAMETER CUBE CAP

- Accepts both 3/4" Flo-Rite Faucet & 3/4" Swivel Faucet
- Tamper evident



## Dispensing Accessories

### B10307 DETERGENT TRANSFER CUBE/PAIL PUMP

- For detergents, alkalis, and water
- Allows easy, directional dispensing of liquids into receiving containers
- Each pump comes with a dip tube to reach the bottom of the container
- Adaptors are interchangeable for pail or cube use, specify type required
- Pumps are 1-1/4" diameter, 5 oz per stroke
- Barrel length: 12"
- Hose length: 9"



### B10602 SINGLE COLUMN RACK

- Plastic construction
- Requires 14" x 15-1/2" floor space
- Holds 5 gallon cube
- Modular design (Spray bottle basket & casters available separately)



### B10308 EMPTY 5 GALLON CUBE W/CAP

- Comes with 70mm cap & vent cap
- Excellent for holding prediluted product
- Fluorinated for greater chemical resistance



### B10511 ALUMINUM DRUM WRENCH

- Universal drum wrench
- Spark proof
- Lightweight aluminum construction



### B10309 70MM CAP WRENCH

- Fits 5 gallon cube cap
- Spark proof
- Lightweight aluminum construction



### B10512 STEEL DRUM WRENCH

- Heavy-duty construction
- Cast iron head
- 12" long handle for extra leverage
- Fits all drums



### B10601 SPRAY BOTTLE BASKET

- Fits cube racks
- Holds 3 trigger sprayer bottles
- Easy to install
- Chemical resistant epoxy coating



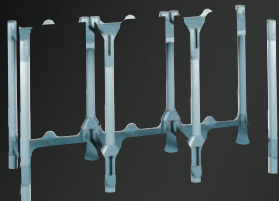
### B10510 FLO KING 2" DRUM TAP

- Faucet body made of high-density polyethylene
- Low-density polyethylene stem for a more positive seal
- Light weight yet durable
- Good chemical resistance



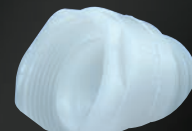
### B10603 MULTIPLE COLUMN RACK

- Plastic construction
- Holds multiple 5-gallon cubes at a lower overall height
- Modular design (Spray bottle basket & casters available separately)



### B10513 2" COARSE TO FINE DRUM ADAPTOR

- Allows drum pumps or 2" Flo King faucet to be used on drums with 2" coarse bungs



## Dispensing Accessories



**B10501**



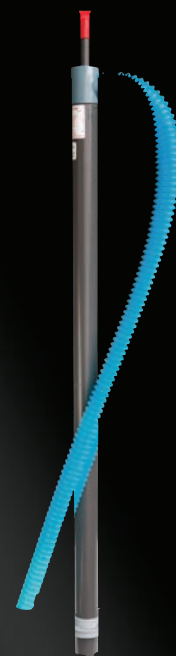
**B10502**



**B10504**



**B10505**



**B10506**

**B10501 DETERGENT TRANSFER DRUM PUMP**

- For detergents, alkalis, and water
- Allows easy, directional dispensing of liquids into receiving containers
- Pumps are 1-1/4" diameter
- 11 oz per stroke
- 36" barrel length
- 30" hose length

**B10502 METAL SOLVENT DRUM PUMP**

- Ideal for solvents, degreasers, and dressings
- All metal discharge tube

**B10504 ACID TRANSFER DRUM PUMP**

- Eliminate the dangerous practice of lifting or tilting drums
- Pumps are designed to safely transfer most acids and easily fit most drums
- The pump barrel and shaft are PVC, while the valves and patented seal are DuPont's Viton
- Acid transfer pumps are 38" long, 1-1/2" in diameter and come with a 1-1/4" x 36" polyethylene discharge hose
- The pump transfers at a rate of 28 oz per stroke
- Individually packaged
- UL listed for transferring Sulphuric Acid (H2SO4) in concentrations up to 50% maximum at 120°F

**B10505 SOLVENT TRANSFER PUMP**

- Hand pumps are constructed of PVC with urethane valves and Buna-N seals
- These models incorporate the same design features of our acid transfer pumps and come with a reinforced vinyl hose
- Pumps are 1-1/2" in diameter, 38" long @ 28 oz per stroke
- 36" hose length

**B10506 ALKALI TRANSFER DRUM PUMP**

- Designed to safely transfer detergents, waxes, alkalis and certain acids
- Incorporates the same design features as the B10504, with valves and seals of DuPont's Hypalon
- Individually packaged
- Pumps are 38" long, 1-1/2" in diameter and deliver 28 oz. per stroke
- B10506 is UL LISTED for transferring Hydrochloric Acid (HCL) in concentrations up to 30% at 100°F maximum
- Adapter: Std. 2" IPS Bung
- Hose length: 3 feet

(WARNING: the B10504 is not compatible with some alkalis, acetic acid (30%) or methyl alcohol. Adapter: Std. 2" IPS bung. Hose length: 3 feet)

## Car Wash Accessories

### B20101 PROFESSIONAL WASH MITT

- High quality, durable wash mitt
- Holds soap & water well, yet releases dirt easily
- Rinses easily & pile resists clumping
- Heavy-duty elastic cuff & serge stitched for constant usage



### B20102 JUMBO WASH MITT

- Comparable quality to B20101 on a larger scale
- Super sized, 9-1/2" x 13"
- Holds greater soap & water
- Covers more area in less time



### B20111 PEANUT SPONGE

- Popular shape combined with economical price
- Made of closed cell polyester foam
- Useful for various cleaning applications



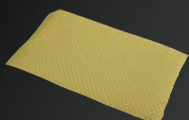
### B20112 SUPER SPONGE

- Highly resistant to heat, stress, solvents, & harsh chemicals
- Highly durable & cost effective
- Open celled polyether foam extracts dirt efficiently, yet dirt rinses freely due to open cell construction



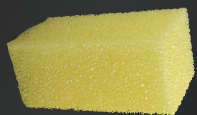
### B20113 LARGE BUG SPONGE

- Polyether sponge encased in durable mesh bag
- Mesh softens upon contact with water
- Effectively & safely cleans bugs & other residue from glass, chrome, & painted surfaces



### B20114 DO ALL SCRUBBER

- Multi-purpose hard surface scrubber
- Ideal for removing bugs & baked on residue



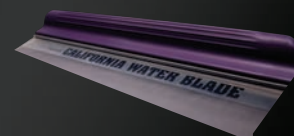
### B20141 INDUSTRIAL HOSE NOZZLE

- Our insulated hose nozzle made from die-cast zinc, will keep the user's hands comfy at temperatures up to 160°F
- Hold open clip allows a car to be rinsed without constant pressure on the handle



### B20211 WATER BLADE

- Made of soft medical grade silicone
- Easy use
- Removes 90% of water per swipe
- Cuts drying time



### B20213 MAT CLAMP

- Heavy-duty aluminum construction
- Designed for wall mounting



## Car Wash Accessories

### B20121 4-1/2" ROUND WHEEL BRUSH

- Ideal for cleaning wheels & rims
- Acid resistant polypropylene fibres
- Fits threaded handle B21033



### B20126 TRUCK STACK BRUSH

- Horseshoe shaped to access all areas of stack
- Designed to clean chrome plated stacks
- Durable construction



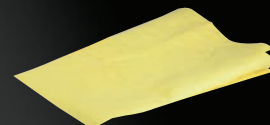
### B20122 10" ACID RESISTANT VEHICLE WASH BRUSH

- Filling material is staple set in plastic block
- 10" blocks have one threaded and one tapered handle hole
- Acid-resistant
- Will accommodate B20133 handle
- Green flagged polystyrene with 2-1/2" bristle trim



### B20200 ZORBIT DRYING CLOTH

- The ultimate vehicle-drying accessory
- 24" x 30" jumbo size
- 100% synthetic, super absorbent
- Outperforms regular synthetic chamois & leaves vehicles bone dry & spot free



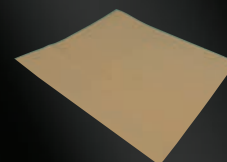
### B20123 9" WHITE VEHICLE WASH BRUSH

- Densely filled fibre
- Staple set in 9" foam plastic block with a protective bumper
- Block has one threaded and one tapered handle hole
- Requires standard tapered or threaded handle
- Has flo-thru hole for B20133 handle
- White flagged polystyrene, 2-5/8" trim length



### B20201 LARGE SYNTHETIC CHAMOIS 24" x 24"

- Absorbs 5-6 times it's own weight in water
- Resists oil & grease better than a real chamois
- Resists mildew



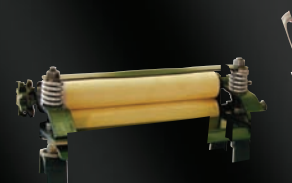
### B20124 10" GREEN VEHICLE WASH BRUSH

- Filling material is staple set in foam plastic block with protective bumper
- 10" blocks have one threaded and one tapered handle hole
- 10" green flagged nylon, 2-1/2" trim length



### C 10509 CHAMOIS WRINGER

- Removes twice as much water from chamois
- Fast
- Mounts on 15 gallon drum
- Hand operated



### B20125 BI-LEVEL VEHICLE WASH BRUSH

- 10" nylon brush
- Soft yellow bristle
- Ideal for large vehicles
- Will accommodate B20133 handle



## Car Wash Accessories



**B20131**

**B20131 60" WOODEN HANDLE/METAL FURL**

- Economical yet durable
- Metal furl for added extra stability & durability



**B20132**

**B20132 YELLOW FIBREGLASS HANDLE**

- Good for use in applications where brush remains in wash bucket
- Will not rot & break at threads
- Resistant to harsh chemicals



**B20133**

**B20133 FLO-THRU EXTENSION HANDLE**

- Attaches to garden hose
- Water shut-off lever on handle
- Fits vehicle wash brushes



**B20134**

**B20134 H.D. FIBREGLASS TELESCOPIC HANDLE**

- Heavy duty & durable
- Extends from 4' to 8'
- Acme threads



## Rim & Tire Accessories

Rim & Tire Accessories

### B40101 TIRE WHITEWALL BRUSH – BRASS BRISTLES

- Durable
- Ideal for whitewall & raised white letter tire cleaning
- Brass fill is staple set in chemical resistant foam plastic block



### B40102 TIRE WHITEWALL BRUSH – NYLON BRISTLES

- Same construction as our B40101 but with nylon bristles
- Also performs well for spot scrubbing on carpets & upholstery



### B40103 12" WHEEL SPOKE & GRILL BRUSH

- Tampico fibre twisted in wire on plain sanded wood handle with hanger in end
- Ideal for wire wheels & detailing front grills



### B40104 PARTS WASHER BRUSH

- Wood handle
- Heavy nylon bristles
- Good heat resistance
- Resistant to most acids
- Ideal for wheel detailing
- Ideal for engine detailing



### B20121 4-1/2" ROUND WHEEL BRUSH

- Perfect for brushing on tire dressings in high volume applications
- Fits 60" threaded handle to save operator fatigue
- Use B20131 or B20132 handle



### C10120 1 GAL. DISPENSING CAN

- For controlled dispensing of solvent degreasers and dressings
- Delivers measured amount to applicator



### B40111 SMALL TIRE DRESSING APPLICATOR

- Heavy duty
- 3" x 5"
- Terry cloth covering withstands solvent dressing and rough surfaces



### B40112 & 40113 TIRE DRESSING APPLICATOR & REPLACEMENT PADS

- Paddle design allows tire sidewalls to be completely dressed in seconds with minimal effort
- Swivel handle reduces arm & shoulder fatigue
- Provides even dressing coverage without an excessive amount of tire dressing
- Simply the BEST dressing applicator on the market



## Detailing Accessories

### B40201 LEATHER & UPHOLSTERY BRUSH

- Soft horsehair fibres set in a polypropylene block
- Works well with Deep Clean for leather cleaning & reconditioning



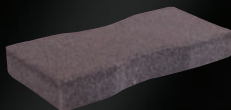
### B40202 LINT BRUSH

- Save time on annoying lint cleanup on fabric seats
- Reversible handle for left handed detailers
- Durable corrosion free construction



### B40203 PET HAIR PICKUP SPONGE

- Durable foam sponge with rubber "pick-up" surfaces on two sides
- Makes quick work of collecting animal hair from interior surfaces
- Much more effective than old style "rubber comb" tool



### B40211 IRON STYLE SCRUB BRUSH

- Versatile
- Easy to hold
- Bristles are made from polypropylene fibres
- Great for coarse scrubbing
- Use on vinyl, upholstery and carpets
- Can be used with hot water
- Good wearing properties



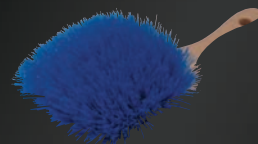
### B40212 SHORT HANDLE POT BRUSH - SOFT BRISTLE

- Soft nylon bristles
- Heat & acid resistance
- Good for upholstery cleaning
- Good for wheel detailing
- Excellent wearing bristles
- 9" handle
- 2" long bristles



### B40213 SHORT HANDLE POT BRUSH - STIFF BRISTLE

- Stiff 2" polypropylene bristles
- 9" handle
- Good for carpet cleaning



### B40214 LONG HANDLE POT BRUSH - STIFF BRISTLE

- Same as our B40213 but with a 16" long handle



### B40215 9" WHITE DETAIL BRUSH

- Heavy-duty nylon bristles inset on an angle to provide maximum cleaning power
- Offset handle eliminates knuckle scrapes
- Perfect for cleaning the narrow strip of carpet between seats & door thresholds



### B40301 DUAL END DETAIL BRUSH

- Stiff nylon bristles
- Toothbrush style
- Ideal for foam pad cleaning



### B40302 5" ROUND DUST BRUSH

- Soft bristles
- Used for interior detailing
- Ideal for removing dust from A/C vents



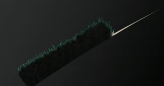
### B40303 DETAIL BRUSH - PAINT BRUSH STYLE

- Single thickness bristles for tight spaces
- Ideal for moulding and seams
- 3/4" trim



### B40304 HORSEHAIR DETAILERS BRUSH

- Soft horsehair bristles
- Excellent for cleaning tucks in leather upholstery
- Steam bent beech handle prevents knuckle scrapes



## Detailing Accessories

### B60201 WAX APPLICATOR 3" x 5"

- Fine terry material
- Used to apply polishes and waxes



### B60202 ROUND WAX APPLICATOR

- Terry covered
- Used to apply polishes and waxes



### B60341 11" DOUBLE SIDED TERRY BONNET

- Fits 11" or 12" orbital polisher
- One side regular terry, other side fine terry
- Washable



### B40311 DASH DUSTER

- Lifts dust like a magnet
- Doesn't just move dust... it removes it
- Compact for interior use



### B40312 CAR DUSTER

- 26" handle & 15" head
- Intended for large surfaces - exteriors
- Same features as Dash Duster except for larger size



### B60111 PLASTIC RAZOR BLADES

- 100 per box
- Ideal for removing pinstriping from painted surfaces
- Fits standard holder
- Ideal for scraping delicate surfaces



### B60112 SINGLE EDGED RAZOR BLADES

- 100 per box
- Fits all standard holders
- Single precision edge blades



### B60113 PLASTIC RAZOR BLADE HOLDER

- Sturdy plastic construction
- Will never rust
- Retracts blade for safety



### B69006 STEEL RAZOR BLADE HOLDER

- Heavy duty
- Metal construction
- Holds both steel and plastic blades
- Retracts blade for safety



**B60101  
0000**



**B60102  
000**



**B60103  
00**

### STEEL WOOL

- Premium grade steel wool
- Available in three grades
- Use for removing wax crayon from glass
- Cleaning & polishing of chrome & metal surfaces
- Packaged 16 pads per sleeve & 12 sleeves per case

# Detailing Accessories

## WHAT IS A MICROFIBRE CLOTH?



A microfibre is so called when it's weight is less than 1 gram per 10 km length. For most microfibres this equals to a diameter of less than 0.012 mm. A microfibre is always made up of two polymers which combine to form a single thread. The polymers used are polyester and polyamide (nylon).

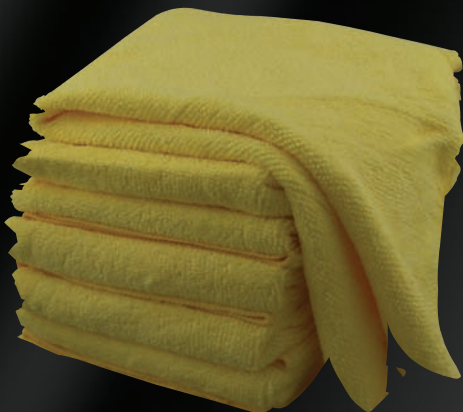
The fibres are then used in the manufacture of microfibre cleaning cloths. This can take various forms; for example non-woven, woven and knitted cloths. Knitted cloths are elastic and convenient in use because of ease of wringing. The fibre material used in knitted cloths is split following manufacture in contrast to the fibres for the nonwoven cloths which are split during the manufacture. In the process the two polymers are separated causing the fibre to break down into components. For correctly split fibres the triangular segments have been fully removed from the core. These segments form the true microfibres and are responsible for the remarkable cleaning properties.

## CHARACTERISTICS OF MICROFIBRES

- Due to their minute structure, micro fibres are better able to penetrate the crevices of the work surface.
- Split microfibres possess sharper edges, affording improved contact with the work surface and superior penetration of dirt.
- One of the microfibre polymers is lyophyllic (has an affinity with oil); so that oil and grease adhere directly to the fibres and do not require preparatory treatment with chemicals. This is also why microfibre cloths do not rinse well and once saturated require laundering.
- Due to the microfibre's fine pores, any droplets remaining on the cleaning surface evaporate quickly, leaving a cleaner, smear free surface.



## ADVANTAGES OF MICROFIBRE PRODUCTS



- Microfibre products give quicker results and clean more easily than conventional cloths.
- The only cloth that will not scratch today's automotive finishes when removing the final coat of wax.
- They are environmentally friendly.
- They are durable.
- They leave a cleaner and smear free surface.
- They are ergonomic; the cleaning effect is maintained even at very low cleaning pressures.
- They are extensively washable; knitted cloths may be laundered up to 500 times at a temperature of 90°C, using a standard detergent without the need for a softener or rinse aid. The nonwovens can be washed between 20 and 30 times.

GREEN MICROFIBRE TOWEL 12PK

B20202

BLUE MICROFIBRE TOWEL 12 PK

B20203

YELLOW MICROFIBRE TOWEL 12 PK

B20204

## Cyclo Accessories

### B40204 4" ULTRA SOFT BRISTLE UPHOLSTERY BRUSH

- Grey flagged brush heads
- Ultra soft bristles for upholstery & velour cleaning



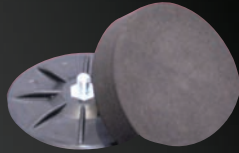
### B40216 4" SOFT BRISTLE CARPET BRUSH

- White shampoo brush heads
- Soft bristles for shampooing carpets



### C10975 CYCLO PAD HEAD ASSEMBLY

- Must be used in conjunction with our B60301 when mounting polishing pads



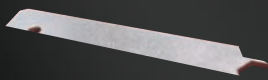
### B60301 4" PAD HOLDER

- Pad holder bonnet with Velcro for use with our line of interchangeable pads
- Speedy pad changeover



### B60302 DRIVE PAD & BRUSH WRENCH

- Special thin wrench facilitates quick pad to brush changes



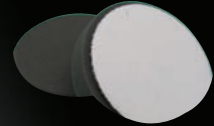
### B60311 4" YELLOW FOAM PAD

- Lt. Compound / Polishing
- With Velcro mount
- 50 PPI yellow foam measuring 4.5" diameter by 1.25" thick



### B60312 4" BLACK FOAM PAD

- Designed for finishing
- With velcro mount
- 80 PPI black foam measuring 4.5" diameter by 1.25" thick



### B60313 WHITE FOAM PAD

- Designed to leave the ultimate finish
- With velcro mount
- 90 PPI white foam measuring 4.5" diameter and 1.25" thick



### C10974 CYCLO POLISHER

Model #5 electric, extremely versatile, used for scrubbing interiors & polishing exteriors. A real workhorse.

## Polishing Accessories

### B60303 4 1/2" GRIP

#### BACKING PLATE

- 5/8" arbor
- Strong metal threads
- Durable construction
- Fits 6" diameter foam pads



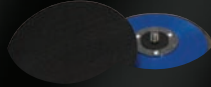
### B60324 6" WHITE FOAM POLISHING PAD

- 6" diameter
- 2" thick soft white pad
- Final cutting/polishing
- Fits 4-1/2" backing plate



### B60304 5" BACKING PLATE FITS PORTER CABLE

- Through riveted construction
- 5/16" x 24 thread
- Allows all of our 6" diameter pads to be mounted on Porter Cable R.O. polisher



### B60325 6" CLAYBAR POLISHING PAD (DESIGNED FOR USE WITH R.O. POLISHER ONLY)

- Holds up to 200 gram clay bar (4" x 3/4" pocket)
- Pad dimension – 6-1/2" x 1-1/2"
- Hook & Loop attachment method
- Use B60304 backing plate



### B60305 7" GRIP BACKING PLATE

- Same construction as B60303 but fits 8" diameter pads



### B40301 DUAL END DETAIL BRUSH

- Stiff nylon bristles
- Toothbrush style
- Ideal for foam pad cleaning

### B60321 MEDIUM CUT FOAM PAD – HARD WHITE

- 6" diameter
- 2" thick hard white foam pad
- Medium cutting
- Fits 4-1/2" grip backing plate



### B60322 LIGHT CUT FOAM PAD – YELLOW

- 6" diameter
- 2" thick hard yellow foam pad
- For light cutting needs
- Fits 4-1/2" grip backing plate



### B60323 BLACK FOAM POLISHING PAD

- 6" diameter
- 2" thick soft black foam pad
- Final cutting/polishing
- Fits 4 1/2" backing plate



## Polishing Accessories

### B60331 8" MEDIUM CUT FOAM PAD – YELLOW

- 8" diameter
- 2" thick
- Flat faced
- Used for cutting / polishing needs
- Yellow in colour



### B60354 FINAL FINISH WOOL PAD – NATURAL

- 7-½" diameter
- 100% wool
- 1-½" long pile height
- Natural colour
- For final polishing



### B60332 8" FINAL FINISH FOAM PAD – BLACK

- 8" diameter
- 2" thick
- Flat faced
- Used for polishing / glazing needs
- Black in colour



### B60306 PROFESSIONAL PAD CLEANING TOOL

- Used for wool pads
- Metal construction



### B60333 8" FINAL FINISH FOAM PAD – WHITE

- 8" diameter
- 2" thick
- Flat faced
- For polishing / glazing use on dark colours
- White in colour



### C10970 9227C MAKITA POLISHER

- The industry standard
- Variable speed, metal gear case
- Includes one B60305 backing plate & one wool pad



### B60351 EXTRA HEAVY CUT WOOL PAD

- 7-½" diameter
- 100% wool
- 4 ply twist
- 1-½" pile
- Natural colour
- Extra heavy cutting



### B60352 HEAVY CUT WOOL PAD - BLUE

- 7-½" diameter
- 100% wool
- 4 ply twist
- 1-½" pile height
- Blue in colour
- Heavy cutting



### B60353 MEDIUM CUT WOOL PAD - YELLOW

- 7 ½" diameter
- 4 ply twist
- Wool / acrylic blend
- 1-½" pile
- Yellow in colour
- Med / light cutting



## Safety and Surface Protection

### B80101 CHEMICAL SPLASH GOGGLES

- Anti fog lens
- Indirect vents
- Soft clear vinyl frames
- Economical chemical splash protection
- Fits over prescription glasses
- Meets ANSI Z87.1-2003 standards



### B80102 SAFETY GLASSES

- Molded from 100% polycarbonate
- Wrap-around styling provides unobstructed peripheral vision
- Molded-in nose bridge
- Meets ANSI Z89.1-2003 standards



### B80104 FACE SHIELD

- Full splash protection
- Adjustable headband
- Replaceable shield



### B80103 PVC APRON

- PVC apron on nylon
- 36" x 45" size
- PVC - resistant to most acids, oils, fats, caustics and petroleum hydrocarbons
- Outstanding abrasion resistance



### B80201 COTTON APRON

- With pockets
- Used for compounding, polishing, etc.
- White in colour
- Screen printed Auto Valet logo



### D10781 NITRILE DISPOSABLE GLOVES

- Most economical nitrile gloves
- Good chemical resistance
- High sensitivity
- Puncture resistant
- Minimum 4 mil. thick
- Higher level of protection than vinyl disposable gloves
- Ambidextrous
- 100 gloves per box Available in: Medium, Large & Extra Large



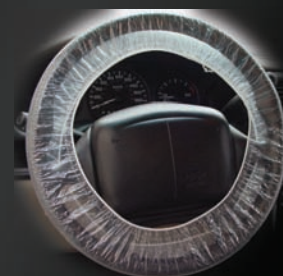
### D10401 FLOOR MATS 17" x 22"

- Manufactured from embossed cardboard
- Resists sliding & bunching
- Water resistant coating on face
- Fully recyclable
- 200 mats per bundle



### D10770 STEERING WHEEL COVERS

- Polyethylene plastic
- Dual elastic ensures snug fit on all steering wheels
- A must for the service department
- 500 per box



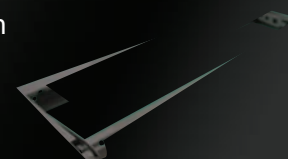
### D10771 PLASTIC SEAT COVERS

- Polyethylene plastic
- "Top Pocket" ensures covers will not slide off
- Can also be used to allow detail customers to drive immediately after a seat shampoo
- 500 per roll



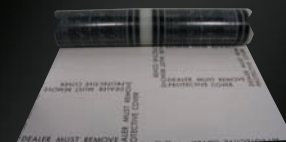
### D10772 SEAT COVER DISPENSER

- Durable steel construction
- Use for easy dispensing of item #D10771
- Keeps seat covers off shop floor and work benches



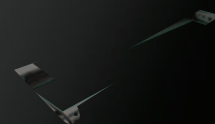
### D10775 CARPET ADHESIVE FILM

- Peel & Stick carpet protection
- Same as what comes on new vehicles from the factory
- 24" wide roll
- Perforated for easy application
- 200' per roll



### D10776 CARPET FILM DISPENSER

- Durable steel construction
- Use for easy dispensing of item #D10775
- A must for easy application of Carpet Adhesive Film
- Will not dispense #D10771





## Shop Maintenance



**Product Code No. 130**

Conc Kleen is a must to maintain the shop floor for efficient working conditions as well as safety and appearance. This orange powdered degreaser turns green upon application with water. It is intended for removing grease, oil and undercoating from asphalt and concrete floors in garages and factories. Biodegradable. Safe on rubber, vinyl and stainless steel.



### **B90101 30" H.D. BLACK FLOOR SQUEEGEE**

- Constructed for tough industrial usage
- Heavy duty frame with twin rubber blades
- High resistance to tearing
- All purpose rubber compound for cleaning areas where oil & heat resistance is not required

### **B90102 RED FLOOR SQUEEGEE**

- Same general construction as B90101, but blade contains neoprene for excellent resistance to oils, salt water, acids, gasoline, & many solvents

### **B90104 60" ALUMINUM HANDLE**

- Light weight
- Durable
- Anodized finish
- Fits floor squeegees

### **B90105 60" TAPERED WOOD HANDLE**

- Constructed from hardwood
- Handle 1-1/8" thick
- Fits floor squeegees

# Proportioning Systems

## MAXIMIZE YOUR SAVINGS WITH AUTO VALET

Our proportioners are an economical way to dispense a wide variety of automatically diluted solution into spray bottles, buckets or other containers at the touch of a button. Dilution is controlled by drawing chemical through metering tips of varying size and injecting this metered amount in the water flow.

## LOWEST COST PER PRODUCT DISPENSED

Our proportioners use durable materials and state of the art water valve technology to provide low costs, consistent performance, and reliable service in a wide variety of customer environments. Because Auto Valet systems use few components to allow dispensing of many products they offer a very low cost-per-product dispensed. The small system size makes it fit well even in a detailer's cupboard. Users will also appreciate the ease of operation and low service requirements of the Auto Valet line.



### C10611 SINGLE 1 GPM PROPORTIONER

- Constructed from corrosion proof materials
- Ensures correct dilution ratios time after time
- Can be linked with other units to provide multiple stations
- Includes backflow protection
- 1GPM unit is perfect for filling our B10110 Sprayer Bottles



### C10612 SINGLE 3.5 GPM PROPORTIONER

- Identical to C10611 except unit flows 3.5 GPM
- Use for filling buckets of wash soap or tank sprayers of degreaser



### C10617 4 x 1 GPM & 1 x 3.5 GPM PROPORTIONER

- Constructed from corrosion proof materials
- Ensures correct dilution ratios time after time
- Provides enough capacity to correctly dilute all the essential products required to perform a complete detail
- Can be linked with other units to provide multiple stations
- Includes backflow protection

## HOW DO I CALCULATE MY "USAGE COST" OF CONCENTRATED PRODUCTS?

Since concentrated products are diluted with water, one gallon of concentrate produces multiple gallons of cleaning solution.

For example, one gallon of concentrate mixed with four gallons of water (a dilution of 1:4 – one part product, four parts water) will produce five gallons of cleaning solution.

Therefore, the purchase price of one gallon of concentrated product does not represent the true cost of the cleaning solution it generates. Usage cost is the ACTUAL cost of the solution, and is based on the number of gallons of solution produced by one gallon of concentrate.

The amount of solution generated by one gallon of concentrate is its Product Yield and is determined by adding the numbers in the dilution rate (1:4 = 5)

Once the Product Yield is identified, Usage Cost is calculated as follows:

Product Cost Per Gallon ÷ Product Yield = Usage Cost

Therefore, if one gallon of product costs \$10.00 and yields five gallons of cleaning solution, its Usage Cost is \$2.00 per gallon (\$10.00 ÷ 5 = \$2.00)

# Applifast.



251 Cree Crescent, Winnipeg, MB Canada R3J 3X4  
Tel: 204 837 8361 • 1 800 563 1293  
info@applifast.com



[applifast.com](http://applifast.com)