

Desoutter**Industrial** Tools

SCREWFEEEDER

Power and
Precision

Boost your process

More Than Productivity



HST - TELESCOPIC HANDHELD UNIT

- High Productivity
- Light and Compact
- Easy to use/ Easy to maintain
- Push Start System



HST

HSF - ADVANCED HANDHELD UNIT

- High performance rate
- Protuding system (retention in jaws)
- Easy to use/ Easy to maintain
- Optional Advanced Nozzle with swivelling arm



HSF

HST

| | |
|----------------------------|-----------------|
| Type | Hand held |
| Start | Push |
| Stroke | up to 78mm |
| Torque | up to 10N.m |
| Pneumatic & Electric Tools | ✓ |
| Screw retention in jaws | ✗ |
| Recommended installation | Balancer or Arm |

SEL/SRL - STATIONARY UNITS

SEL
SRL

- Simple & flexible
- Dedicated solution robot with SRL / MTB
- Easy to integrate / Easy to maintain
- SEL with 2 strokes / SRL with 1 stroke



HSF

Hand held

Lever

up to 110mm

up to 15N.m



Arm

SRL

Fixture

Remote

up to 180mm

up to 100N.m



Fixture Installation
Robot

SEL

Fixture

Remote

up to 80/180mm

up to 100N.m



Fixture Installation

ZSE - Modular Bowls feeders

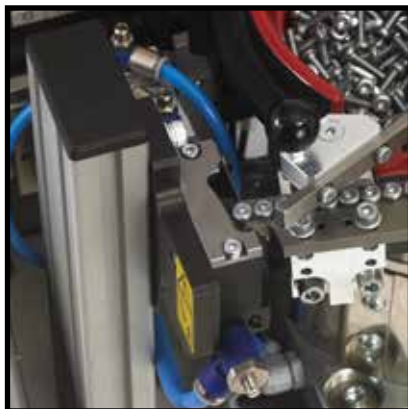
ZSE



Our bowl units have been strongly designed for a quick and easy access to the critical elements, improving effective efficiency and reducing maintenance time.



Linear rail and escapement accesses are simple, but also settings safety so nobody can easily change the machine parameters.

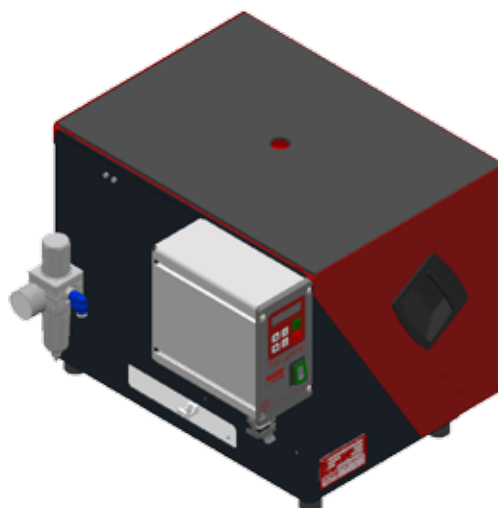
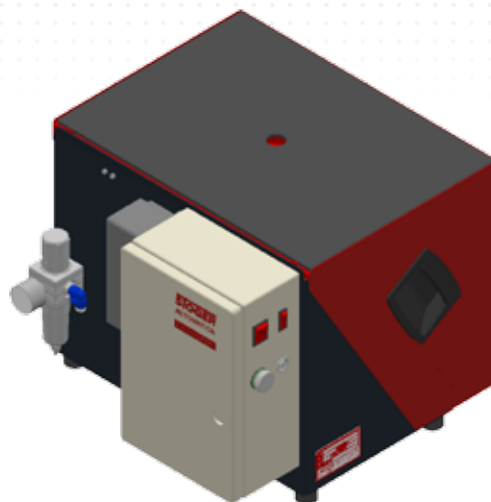


Easy to use / Easy to maintain

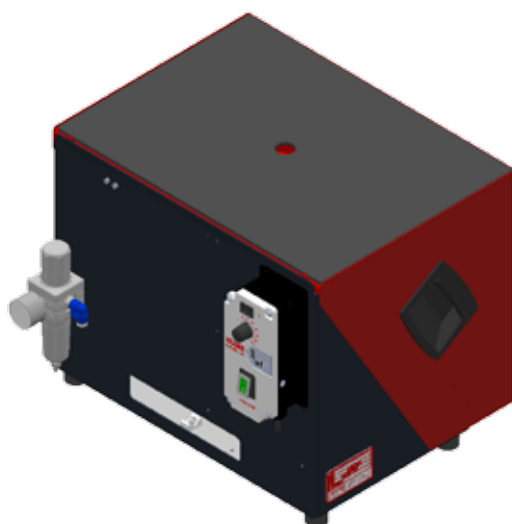
MODULAR BOWLS FEEDERS

Through the modular concept of our bowl units, the perfect adapted solution will be implemented on your system.

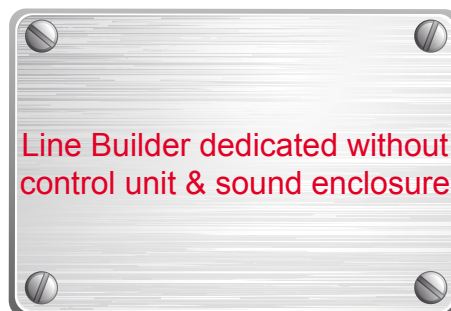
Model with advanced control unit (PLC) for fixture & adv. Handheld systems



Model for handheld station with control unit



Line Builder dedicated without control unit & sound enclosure



EXTENDED KNOW-HOW

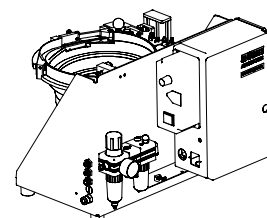
From standard screws to specific nuts or stud bolts, our design department is able to investigate and propose the best adapted solution to your assembly request.

When the tightening access is difficult and tight, we are able to extend our standard solution with vacuum unit, ball bushing system or magnetic bit.

On request, we can also propose multidrop systems to feed 2 to 3 spindles with one bowl unit.

BOWLS UNITS DATA

| MODEL | VOLUME liter | SCREW DIMENSIONS | WEIGHT kg (lbs) | DIMENSIONS mm (in) |
|---------|-----------------|---------------------|--------------------|------------------------------|
| ZSE1800 | 0.4 | up to Ø8 X 20mm | 20 | 255X318X322 (10X12.5X12.7) |
| ZSE2600 | 1 | up to Ø12 X 35mm | 35 | 450X337X372 (17.7X14.3X14.6) |
| ZSE4000 | 3 | up to Ø20 X 70mm | 80 | 759x633x459 (29.9X17.7X18.0) |

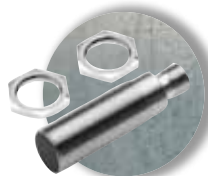


ACCESSORIES

Sensors



Screw present sensor
Screw feeding detection on hose



Home sensor
Home position detection of
cylinders on SEL/SRL

Depth sensor

Depth tightening detection
when required by application



Escapement sensors
Control/Secure
escapement mechanism

Bowl options



Control level
Detect and inform when
the bowl is empty

Hopper

increase your bowl capacity



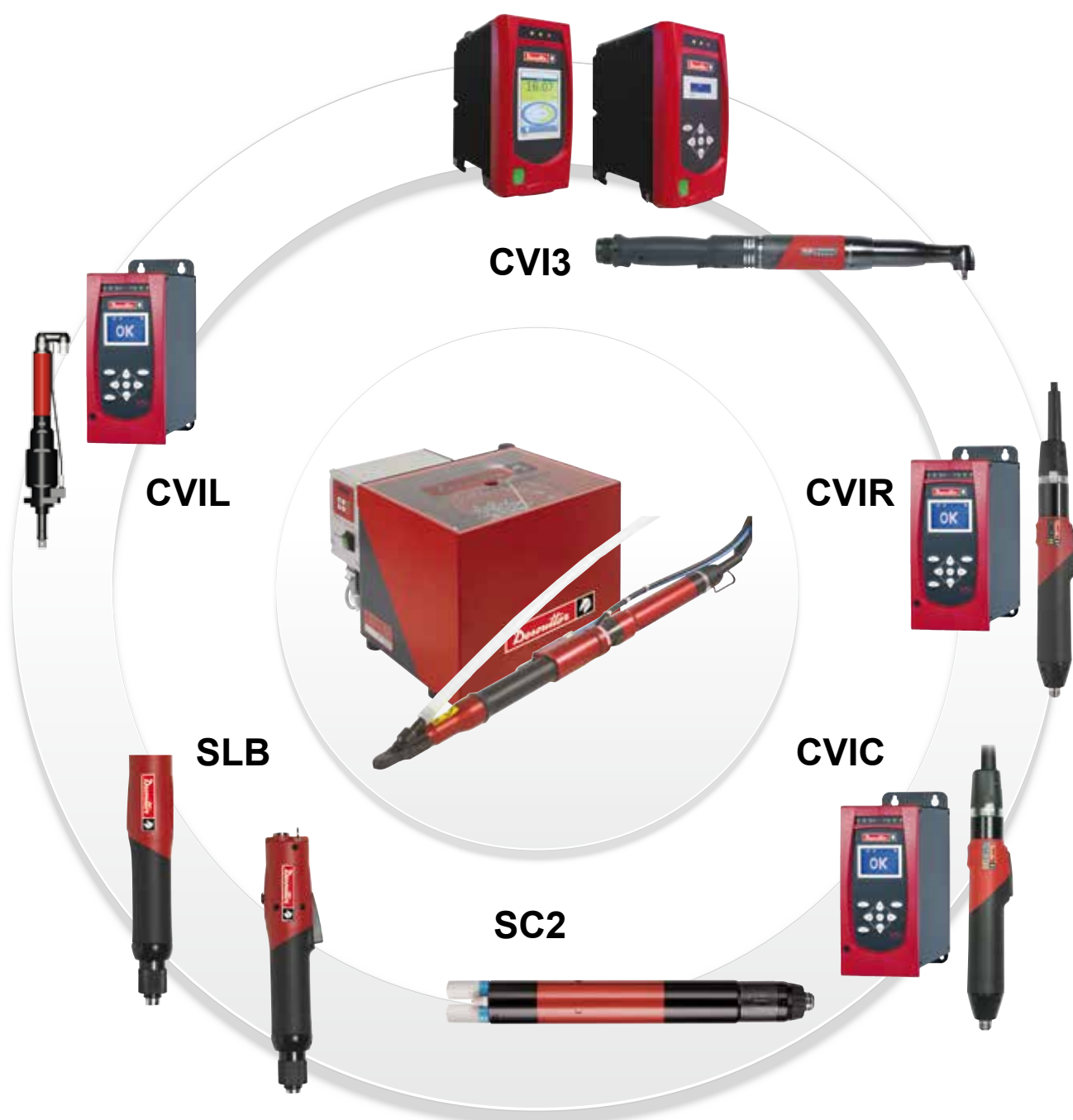
Linear arms



TOOLS RANGE

On all screwfeeding systems, you will have the possibility to install a Desoutter tightening solution from pneumatic screwdrivers to advanced solution.

Our expertise and know-how bring a high level of performance, efficiency and reliability with a very interesting return on invest.



Applifast.



251 Cree Crescent, Winnipeg, MB Canada R3J 3X4
Tel: 204 837 8361 • 1 800 563 1293
info@applifast.com



applifast.com