



MINI CATALOG

ENTRANCE MATS • LOGO MATS • ANTI-FATIGUE MATS • SPECIALTY MATS

Satisfaction Guaranteed

M+A mats are where design and function come together, where quality isn't compromised to meet a price point, and where solutions to your maintenance and décor problems come first. We promise our customers an unconditional, 100% satisfaction guarantee for the life of the product.

At M+A, we are committed to reducing our environmental impact. We are continually improving our environmental performance as an integral and fundamental part of our business strategy and operating methods. We have reduced waste going to landfills by 80% and recycle most paper, metal, cardboard, plastic, carpet, and rubber waste we generate. Our commitment is also evident in our development of dozens of mat styles that contain recycled raw materials.

For over five decades, M+A Matting has been America's leader in innovative floor protection systems, industrial safety, anti-fatigue products, and high performance entrance matting. If you are looking for better ways to minimize maintenance, prolong floor surface life, reduce cleaning costs, improve safety, or increase worker comfort, ask for M+A Matting.

3

Mat Entry System

Stop dirt and moisture at your door

1

Scraper

Scraper mats are designed for placement outside to stop mud and large debris from entering your building. These mats provide aggressive scraping action to remove dirt and debris from shoes and trap it in recessed areas.

2

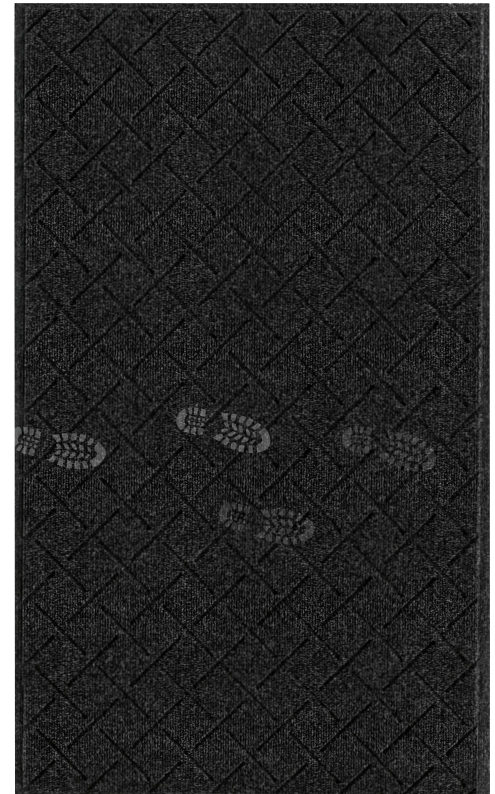
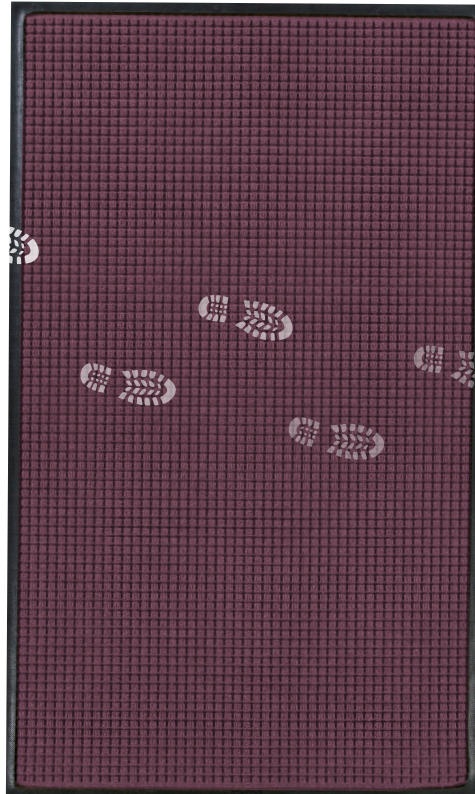
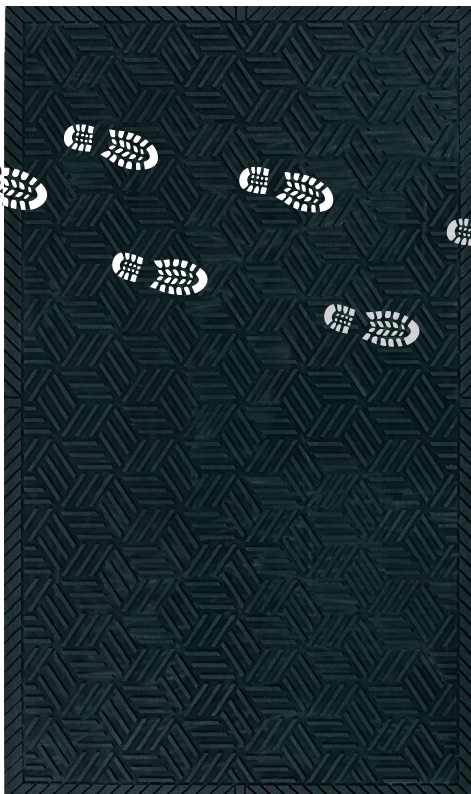
Scraper/Wiper

Scraper/wiper mats are designed to provide scraping action and wiping to further stop dirt and moisture from entering a facility. These mats are typically made of tough fabrics. They channel and retain dirt in recessed grooves while dissipating moisture on the fabric surface. These mats are primarily used inside but may be used outside as well.

3

Wiper

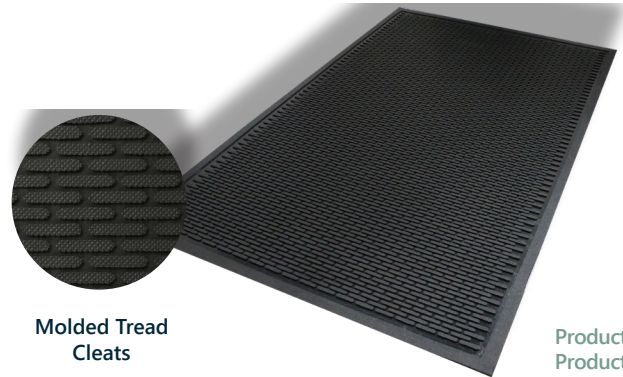
As entrance mats, carpeted mats are designed to remove any remaining dirt and moisture from shoes. They also provide excellent dust control. The carpet is made in various materials and colors to suit a variety of needs and blend with virtually any décor. Carpeted mats are designed for indoor use. When used in conjunction with a scraper mat and WaterHog mat, they can help stop as much as 80% of dirt from entering a building.



SUPERSCAPE™

SuperScrape mats feature molded tread surface cleats that effectively scrape tough dirt and grime from shoes. They're ideal for use outside as a scraper mat or slip-resistant mat in wet areas.

- **Clean** – Surface cleats effectively remove and trap dirt and sand below shoe level to prevent tracking
- **Safe** – Slip-resistant even in wet environments; certified high-traction by the National Floor Safety Institute (NFSI)
- **Durable** – Grease/oil proof; chemical resistant
- **Easy to Clean** – Lightweight flexible design ensures easy handling and cleaning (shake off soil and hose off)



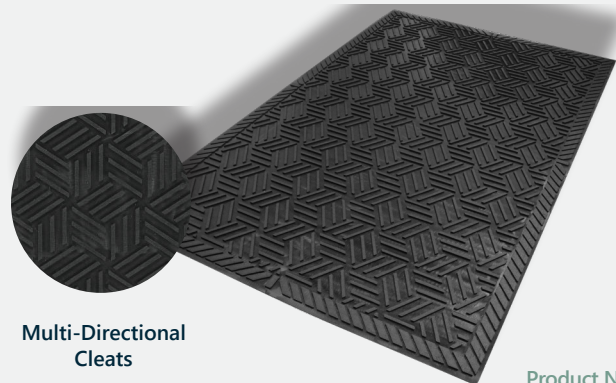
Molded Tread Cleats

Product No. 5555,
Product No. 555*
*stocked items available
to ship quickly

SUPERSCAPE PLUS®

SuperScrape Plus mats feature a multi-directional molded tread pattern that effectively scrapes tough dirt and grime from shoes. The unique drainable borders help filter water off the mat, making it ideal for use outside as a scraper mat or as a slip-resistant mat in wet areas.

- **Clean** – Multi-directional surface cleats effectively remove and trap dirt and sand below shoe level to prevent tracking; drainable borders filter water off mat
- **Safe** – Slip-resistant even in wet environments; certified high-traction by the National Floor Safety Institute (NFSI)
- **Durable** – Grease/oil proof; chemical resistant
- **Easy to Clean** – Lightweight flexible design ensures easy handling and cleaning (shake off the soil and hose off)



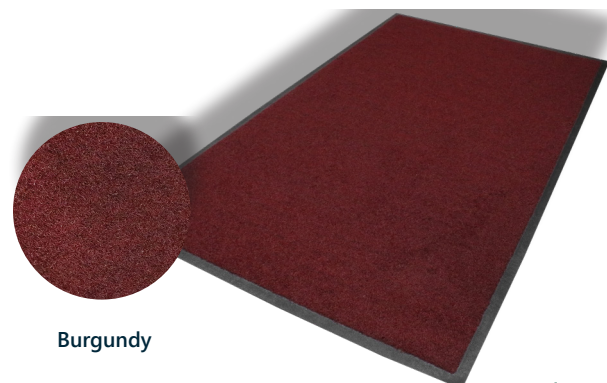
Multi-Directional Cleats

Product No. 5558

BRUSH HOG™

Designed for outdoor use, the Brush Hog mats feature coarse nylon fibers that aggressively remove dirt and moisture from shoes to keep your floors clean and dry.

- **Clean** – The turf-pile construction aggressively scrapes dirt from shoes and filters moisture and dirt away from the mat surface; drainable borders
- **Fade-Resistant** – Solution-dyed nylon will not fade in sunlight
- **Safe** – Certified high-traction by the National Floor Safety Institute (NFSI)
- Available in 3 colors
- Comes standard with 78-mil smooth SBR backing, but is available with 78-mil universal cleated SBR backing



Burgundy

Product No. 395



The Wonderful World of WaterHog® Mats

Since its introduction in 1986, WaterHog has become American's best-selling mat. Renowned for its bi-level design and water dam border, it's highly effective at stopping dirt and moisture, keeping floors clean and dry.

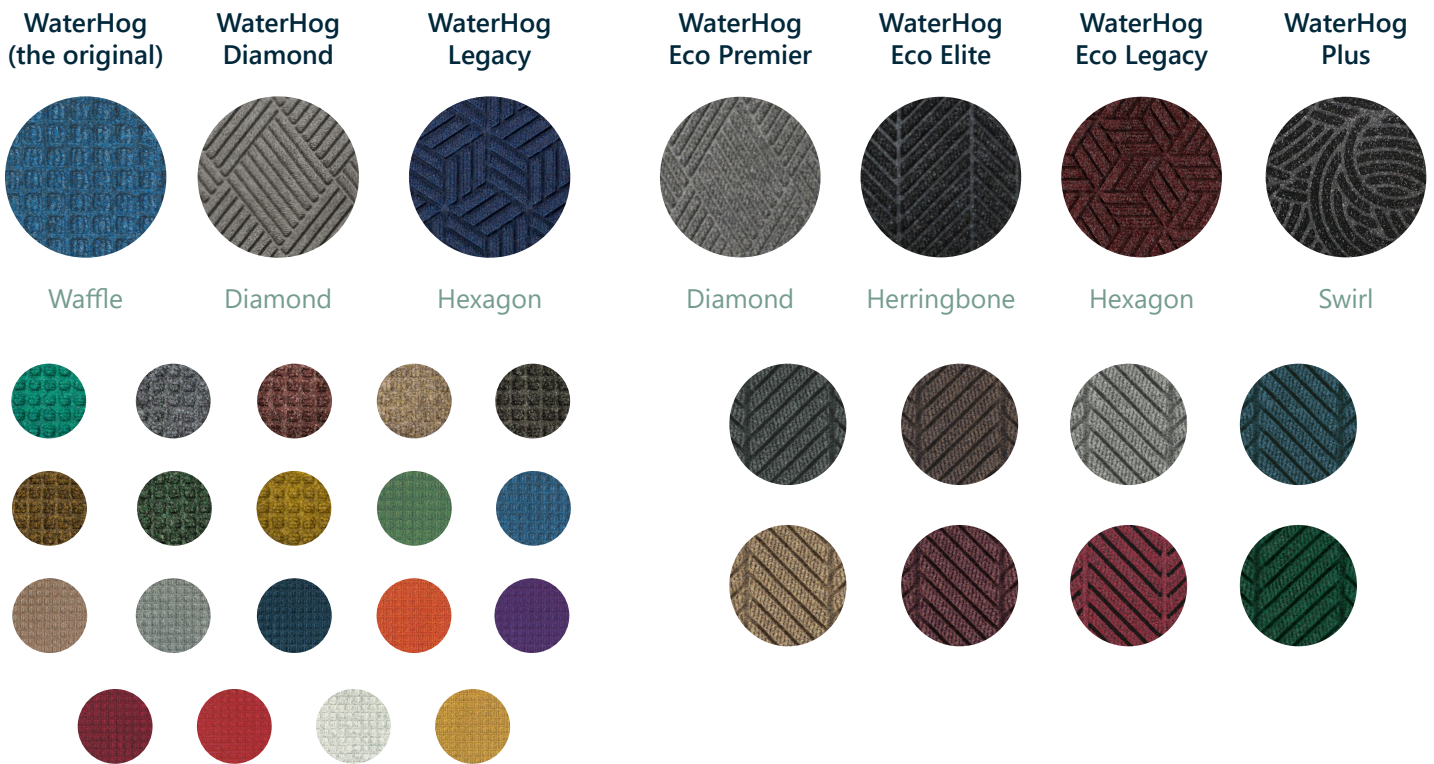
The WaterHog product line has grown substantially over the last three decades to include a wide array of patterns, colors, and sizes. With so many options and a unique nomenclature, selecting a WaterHog mat can seem challenging at first, but these steps are designed to simplify the selection process.

1. Pick Your Fabric Weight

Both the 24-ounce *WaterHog* and 30-ounce *WaterHog Eco* product lines are made with PET, an eco-friendly polyester made from 100% post-consumer recycled plastic bottles.

2. Pick Your Pattern and Color

The *WaterHog* (24-ounce) line comes in three designs with 19 color options. The *WaterHog Eco* (30-ounce) line comes in four designs with 8 color options.



Logo mat options available for WaterHog products.

3. Pick Your Border

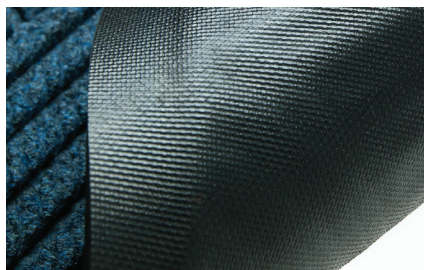


Classic Rubber Border

Fashion Fabric Border

4. Pick Your Backing

All WaterHog mats are backed with rubber. The standard backing is a 78-mil SBR (styrene-butadiene rubber) with either a smooth surface for placement on smooth/hard floors (like marble, tile, or wood) or with a universal backing surface for placement on carpeted floors. Select WaterHog mats with a classic border are available with Anchor Safe® backing, a 100-mil nitrile backing with a heavy tread design to ensure the mats stay in place, even with heavy traffic.



Smooth Backing
78-mil SBR
Recommended for hard floor surfaces



Universal Backing
78-mil SBR
Designed to perform on both carpeted and smooth floors

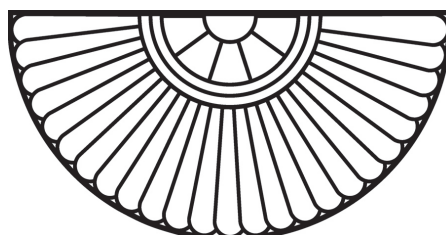


Anchor Safe® Backing
100-mil nitrile
Recommended for surfaces with heavy traffic or cart use

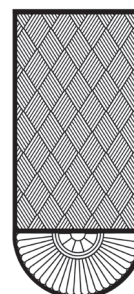
5. Add Some Optional "Grandeur"

If you're interested in adding a little grandeur to your entrance matting, you may want to consider a *WaterHog Grand* or *WaterHog Eco Grand* mat. The luxurious rounded mats can be placed at either or both ends of:

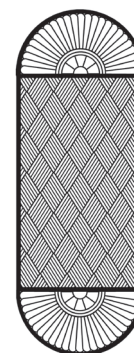
- » WaterHog Diamond
- » WaterHog Eco Elite
- » WaterHog Eco Premier



Half Oval



One End

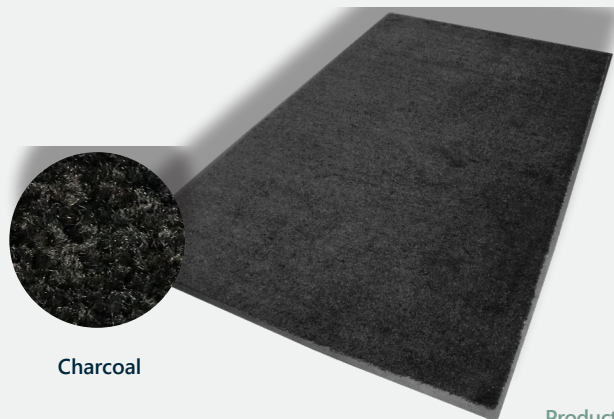


Two Ends

COLORSTAR®

ColorStar mats feature the latest innovation in dyeing technology and PET carpet made with 100% post-consumer recycled plastic, making them exceptionally color-fast (fade resistant) and eco-friendly.

- **Eco-Friendly** – ColorStar mats are made with PET, a type of polyester yarn that features 100% recycled content reclaimed from plastic drink bottles
- **Fade-Resistant** – PET yarn has excellent color-fastness and is resistant to fading from repeated washing or cleaning
- **Stain-Resistant** – PET yarn is naturally stain resistant, making it easy to remove stains from the mat
- **Safe** – Certified high-traction by the National Floor Safety Institute (NFSI)
- Available in 24 colors
- Available with a choice of SBR (48 mil) or nitrile rubber (52 mil, 65 mil, 90 mil) backing



Charcoal

Product No. 100



COLORSTAR® IMPRESSIONS

ColorStar Impressions mats feature your custom logo or artwork digitally printed on eco-friendly PET fabric. The logos and designs are digitally printed at 76 dpi, making fine details, shading, and 3D images achievable. Choose from 60 standard colors.

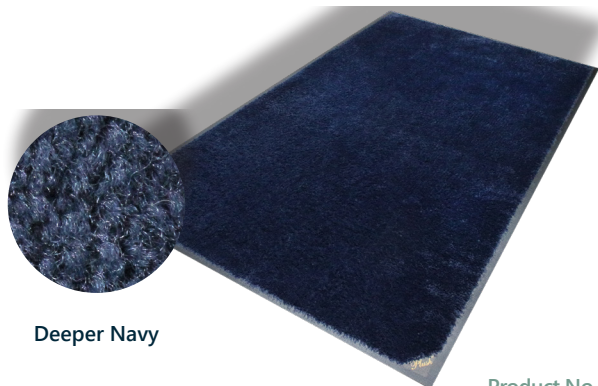


Product No. 60

PLUSH™ MATS

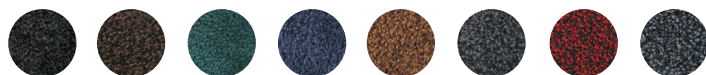
Plush mats feature a thick, plush carpet pile designed to absorb more moisture than standard mats.

- **Superior Moisture & Dust Control** – Heavier carpeted piles absorb and retain 50% more moisture and dust than standard mats
- **Fade-Resistant** – Solution-dyed nylon won't fade in sunlight or with repeated washing; impervious to bleach
- **Resilient** – High-twist, heat-set nylon resists crushing to better trap dirt and extends the useful life of the mat
- **Safe** – Certified high-traction by the National Floor Safety Institute (NFSI)
- Available in 8 color options on durable 90-mil nitrile rubber with multiple backing options (smooth, cleated, or suction) to ensure the mat stays in place on your floor



Deeper Navy

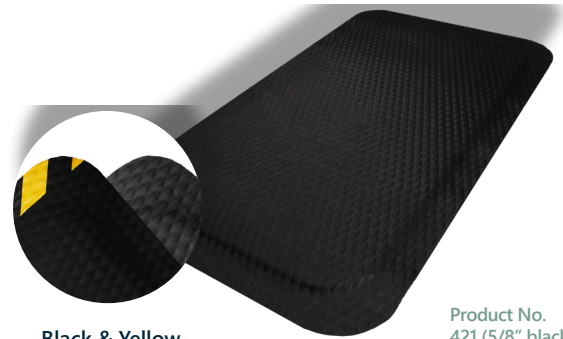
Product No. 180



HOG HEAVEN®

Hog Heaven anti-fatigue mats are designed to provide comfort and durability in a variety of harsh conditions.

- **Comfortable** – High-density nitrile-blended cushion helps eliminate pressure to the lower back and legs, providing superior comfort
- **Safe** – Certified high-traction by the National Floor Safety Institute (NFSI); sloped edges provide a safe transition from floor to mat
- **Durable** – Nitrile-blended cushion provides years of useful service life; cushion is molded, not glued, to the nitrile rubber surface so it will not separate; edges will not crack or curl
- **Versatile** – Welding safe; ESD rating of electrically conductive; chemical resistant; surface is grease/oil proof and cushion is grease/oil resistant
- Available in 5/8" or 7/8" thicknesses with solid black or with OSHA-approved caution yellow borders on two sides

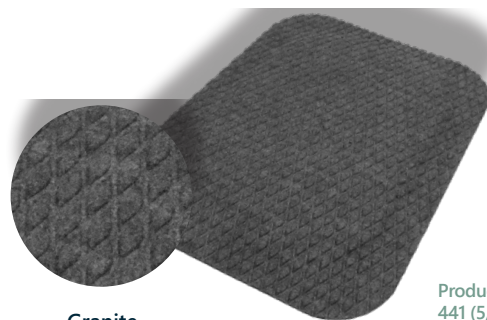
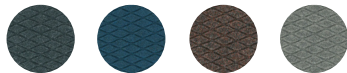


Black & Yellow Striped Borders

Product No.
421 (5/8" black border)
422 (7/8" black border)
423 (5/8" striped border)
424 (7/8" striped border)

HOG HEAVEN® FASHION

Hog Heaven Fashion mats feature the same excellent anti-fatigue qualities as a Hog Heaven mat, but with an attractive, eco-friendly fabric top.



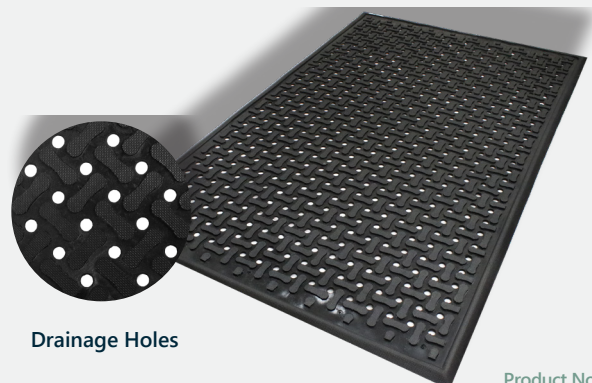
Granite

Product Number
441 (5/8"), 442 (7/8")

COMFORT FLOW™

Comfort Flow is a flow-through mat with excellent anti-fatigue properties designed for wet areas where grease, oil, and chemicals may be present.

- **Clean** – Drainage holes allow liquid to flow through; lifetime anti-microbial treatment prevents odors and degradation of the mat
- **Safe** – Beveled edges provide a safe transition from floor to mat; certified high-traction by the National Floor Safety Institute (NFSI)
- **Comfortable** – High-density closed-cell nitrile rubber cushion provides excellent anti-fatigue qualities
- **Versatile** – Grease and oil proof; chemical resistant; welding safe
- **Easy to Clean** – Lightweight flexible design ensures easy handling and cleaning



Drainage Holes

Product No. 420

CLEANSHIELD® MATS

CleanShield mats are premium disposable restroom mats designed to help prevent odors and protect floors and grout from uric acid damage.

- **Minimizes Odors** – Anti-microbial treatment provides lifetime protection from odors and degradation
- **Protects Floors** – Seep-Guard barrier eliminates urine seepage, protecting your floors from damage caused by uric acid
- **Stays in Place** – Tacki-Back adhesive keeps the mat flat and in place
- **Hassle Free & Dries Quickly** – Mats can be left in place during daily floor cleaning; floor scrubbers, mops, and brooms will pass over without causing damage; surface dissipates water quickly for fast drying time
- **Eco-Friendly & Attractive** – PET fabric surface is made from 100% post-consumer recycled plastic bottles and features an attractive diamond pattern that provides an upscale look
- Designed for 30-day usage; easy-to-read TimeStrip® indicates when it's time to replace the mat (step on/push to initially activate)



Urinal Mat
Product No. 4065
*Sold by the case/box;
6 mats per case

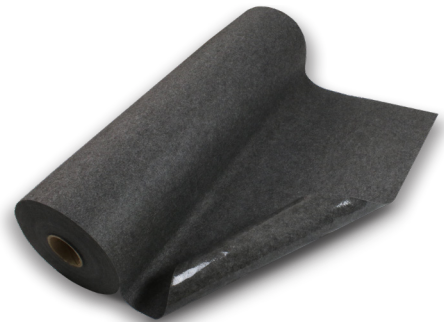


Commode Mat
Product No. 4055
*Sold by the case/box;
6 mats per case

SURE STRIDE® MATTING

Sure Stride is low-profile, anti-microbial matting with adhesive backing to ensure it stays in place. It is recommended for commercial use on hard floor surfaces to help prevent slips, trips, and falls caused by moisture.

- **Keeps Floors Dry** – Moisture barrier keeps liquids from soaking through to the floor
- **Stays in Place** – Adhesive backing keeps mat flat and in place, even with heavy cart and buggy traffic
- **Hassle Free & Dries Quickly** – Mats can be left in place during daily floor cleaning; floor scrubbers, mops, and brooms will pass over without causing damage; surface dissipates water quickly for fast drying time
- **Safe** – Certified high-traction by the National Floor Safety Institute (NFSI)
- **Odor Resistant** – Anti-microbially treated for protection from odors
- **Easy to Install** – Cut individual mats from the roll as needed
- Will perform for up to 4 months under normal use



Product No. 4450

ACCESSORIES

One cutting knife is included with each roll, additional knives may be purchased separately as well as cutting boards. Individual mats can be cut from the roll as needed.



Cutting Board
(sold separately)
Product No. 4459

Cutting Knife
(included)
Product No. 4460

Applifast.



251 Cree Crescent, Winnipeg, MB Canada R3J 3X4
Tel: 204 837 8361 • 1 800 563 1293
info@applifast.com



applifast.com