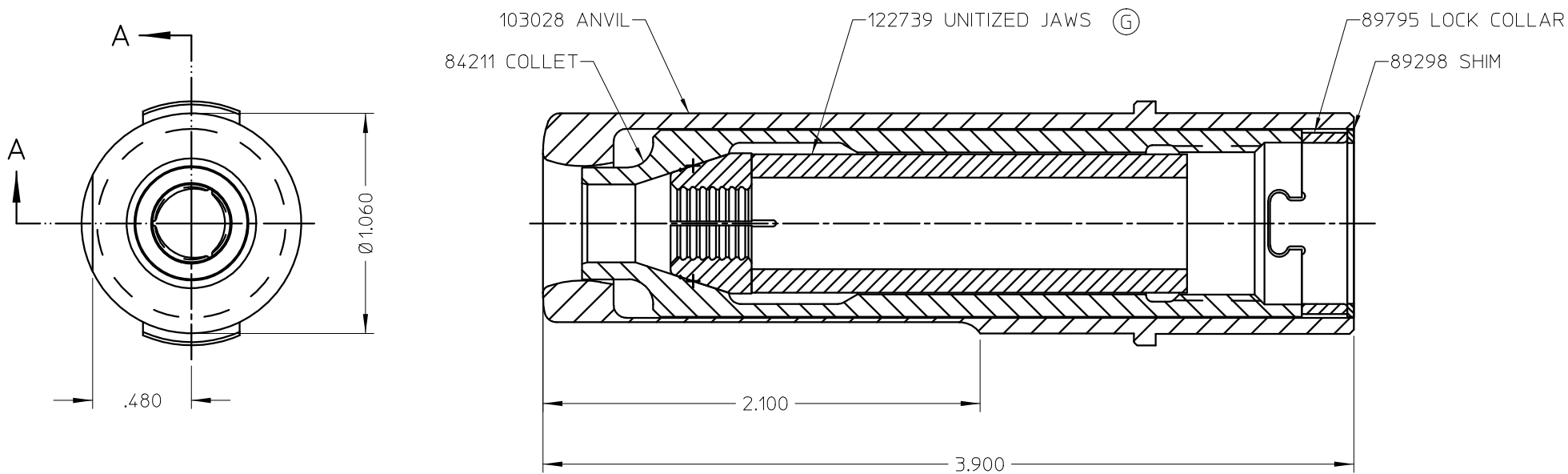




By accepting this proprietary Huck drawing, recipient agrees not to reproduce or disclose any part thereof to any others without the written permission of Huck International, Inc.

REV	DESCRIPTION	DATE
F	REDRAWN WITH NEW BORDER	06-16-92
G	P/N 122739 WAS 113929.	-



SECTION A-A

MATERIAL:	-	SPEC: -	TOLERANCES UNLESS OTHERWISE SPECIFIED		HUCK INTERNATIONAL, INC., I.E.D. 85 GRAND STREET, P.O. BOX 2270 KINGSTON, NEW YORK 12401			
HARDNESS:	-							
HEAT TREAT:	-	SPEC: -	.XX, .XXX ±	-	NOSE ASSEMBLY -12 C6L			
SURF. TREAT:	-	SPEC: -	INT. COR. RADII	-				
SURFACE FINISH NOT TO EXCEED		Ra	BREAK EDGES	-	DET:SMR	CK:	DATE: 6-16-92	SCALE: 2/1
IDENTIFICATION PER SPEC 42-311: ★ CHEMICAL ETCH			ANGLES ±	-	FOC.	B	99-100	
SURFACES TO BE ☉, //, ⊕, ⊥, & ▽ WITHIN -			T.I.R.	FINAL ASSY: -	FAC.			