

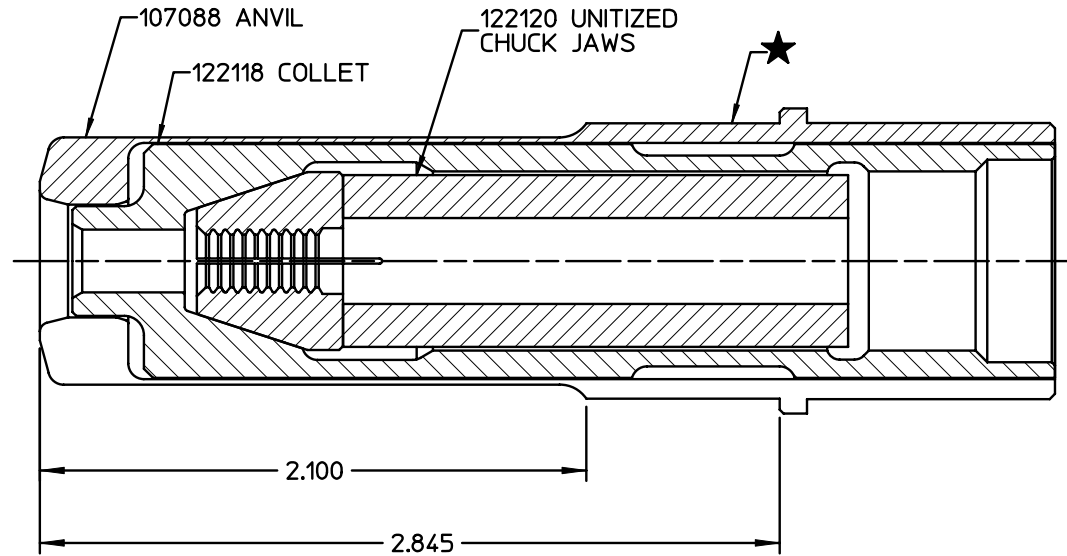
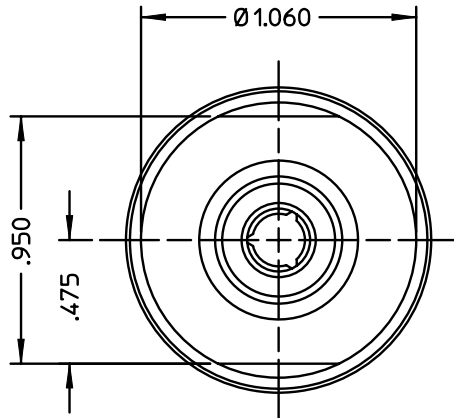


By accepting this proprietary Huck drawing, recipient agrees not to reproduce or disclose any part thereof to any others without the written permission of the Huck Manufacturing Company.

REV	DESCRIPTION	DATE
H	ADDED NOTE: 1.	10/31/00

NOTE:

- (H) 1. THE FOLLOWING STEEL DFLECTORS ARE OPTIONALLY AVAILABLE:
 FOR USE WITH 246 TOOL, USE 123634-246.
 FOR USE WITH 2502/2503 TOOL USE 123634-2503.
 FOR USE WITH 2580 TOOL USE 123634-2580.



MATERIAL:	-	SPEC: -	TOLERANCES UNLESS OTHERWISE SPECIFIED		HUCK MANUFACTURING COMPANY I.E.D. 85 GRAND STREET, P.O. BOX 2270 KINGSTON, NEW YORK 12401			
HARDNESS:	-				NOSE ASSEMBLY -10 BOM			
HEAT TREAT:	-	SPEC: -	.XX, .XXX ±					
SURF. TREAT:	-	SPEC: -	INT. COR. RADII					
SURFACE FINISH NOT TO EXCEED		Ra	BREAK EDGES		DET: T.L.	CK: -	DATE: 7-16-91	SCALE: 2/1
IDENTIFICATION PER SPEC 42-311: ★ CHEMICAL ETCH			ANGLES ±		FOC.	B	99-769	
SURFACES TO BE ☉, //, ⌀, ⊥, & ▤ WITHIN			T.J.R. FINAL ASSY: -		FAC.			