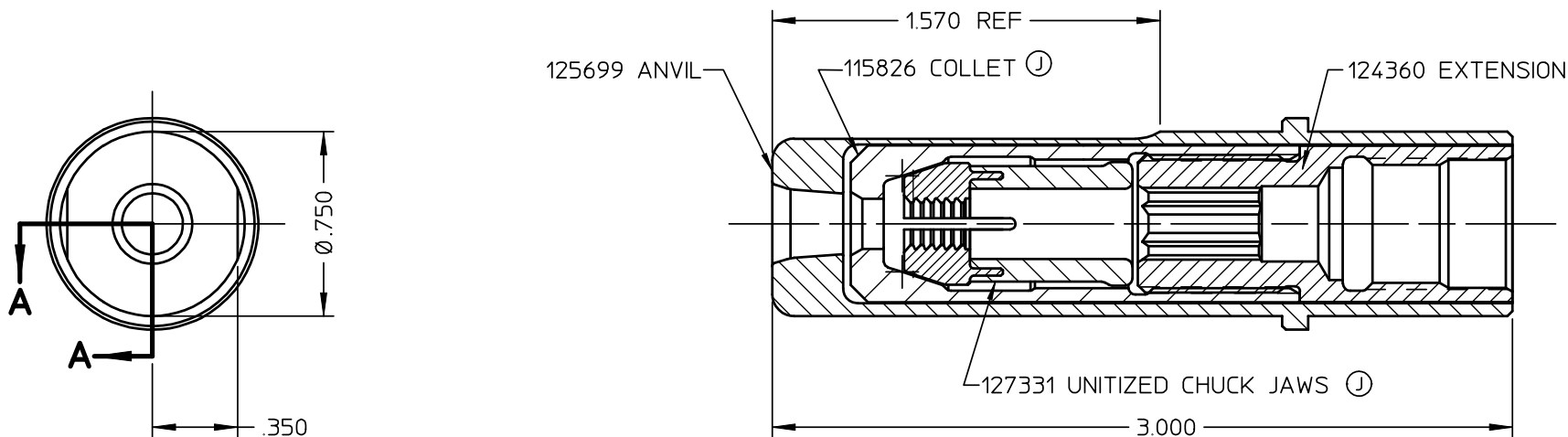




| REV | DESCRIPTION | DATE |
|-----|---|----------|
| H | 126001 CHUCK JAWS WAS 117760 AND UPDATE PICTORIALY COLLET | 02/01/00 |
| J | 127331 JAW WAS 126001 JAW PICTORALY UPDATED 115826 COLLET | 09/05/03 |

NOTES:

- 1 SHIP WITH O-RING P/N 500778.
- 2 BEFORE ATTACHING NOSE ASSEMBLY TO TOOL, INSTALL SUPPLIED O-RING ON TO THREAD RELIEF OF PULL PISTON.



SECTION A-A

| | | | |
|---|---------|---|--|
| FORM: KE104 REV C | | By accepting this proprietary Huck drawing, recipient agrees not to reproduce or disclose any part thereof to any others without the written permission of Huck International, Inc. | |
| MATERIAL: | SPEC: - | TOLERANCES UNLESS OTHERWISE SPECIFIED | |
| HARDNESS: | | HUCK INTERNATIONAL, INC., I.S.D. 1 CORPORATE DRIVE, P.O. BOX 2270 KINGSTON, NEW YORK 12401 | |
| HEAT TREAT: | SPEC: - | XX, .XXX ± | NOSE ASSEMBLY -06 MG |
| SURF. TREAT: | SPEC: - | INT. COR. RADII | |
| SURFACE FINISH NOT TO EXCEED Ra | | BREAK EDGES | DET: PRS CK: DATE: 07/29/94 SCALE: 2:1 |
| IDENTIFICATION PER SPEC 42-311: ★ CHEMICAL ETCH | | ANGLES ± | FOC. B |
| SURFACES TO BE ☉, //, ⌀, ⊥, & ▤ WITHIN T.I.R. | | FINAL ASSY: - | 99-1456 |